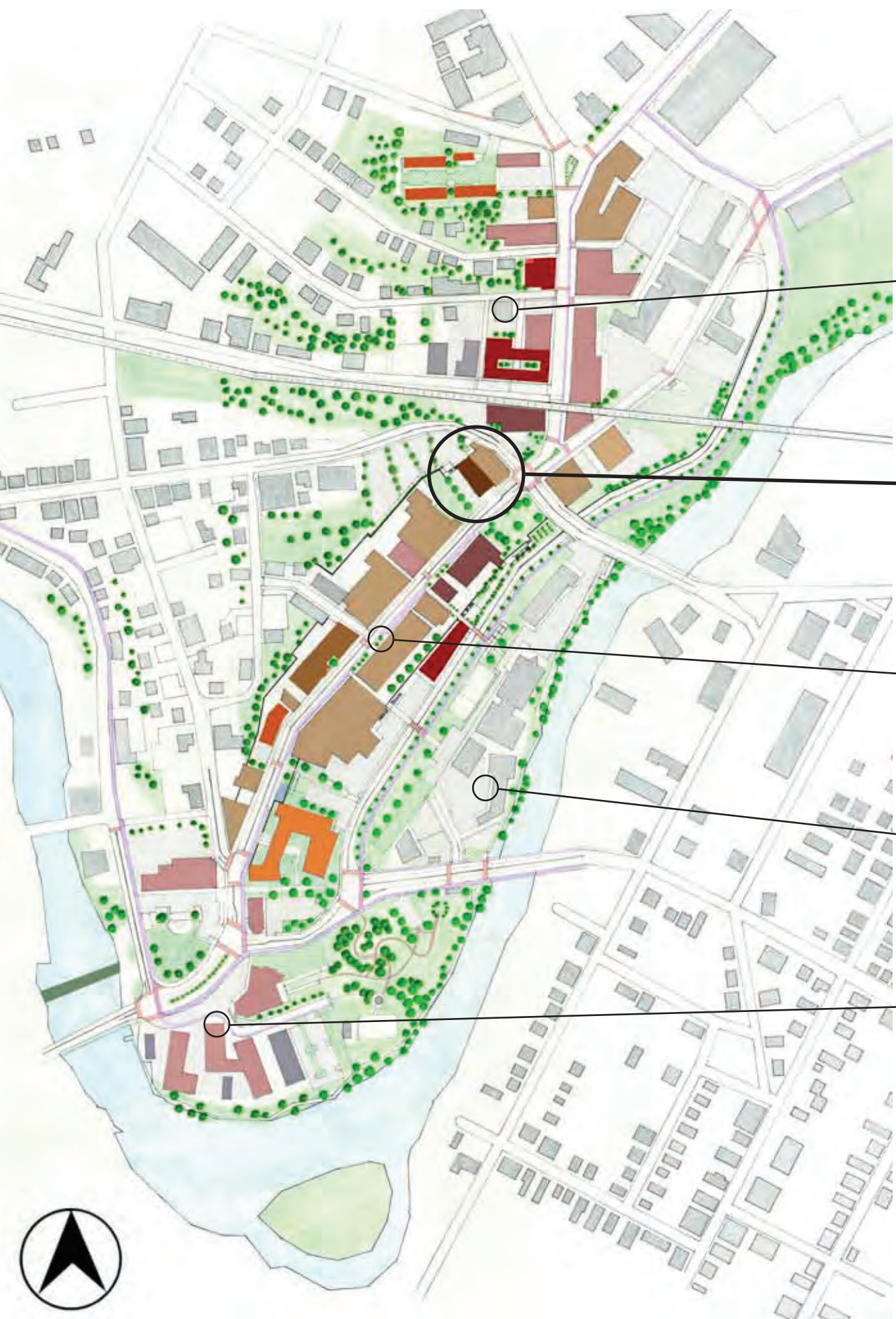
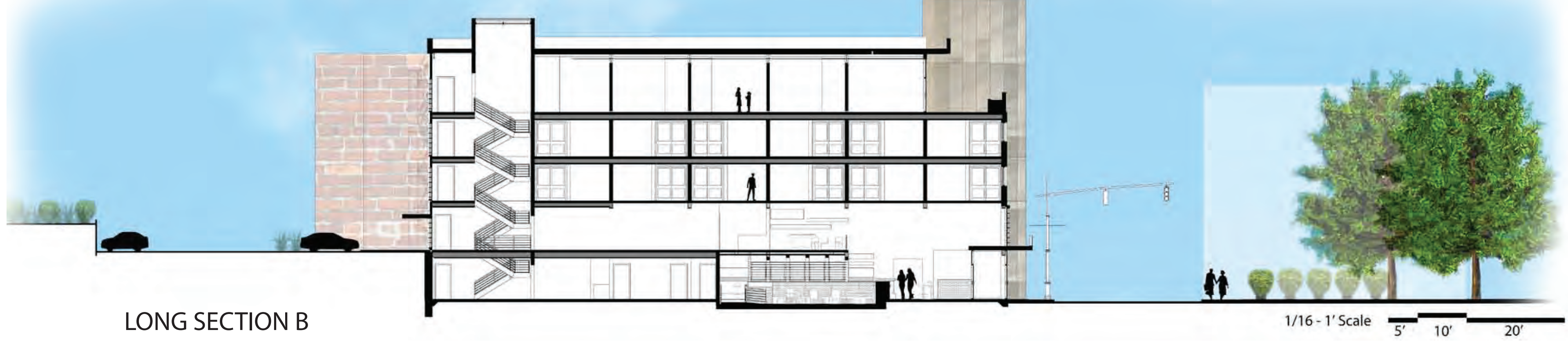
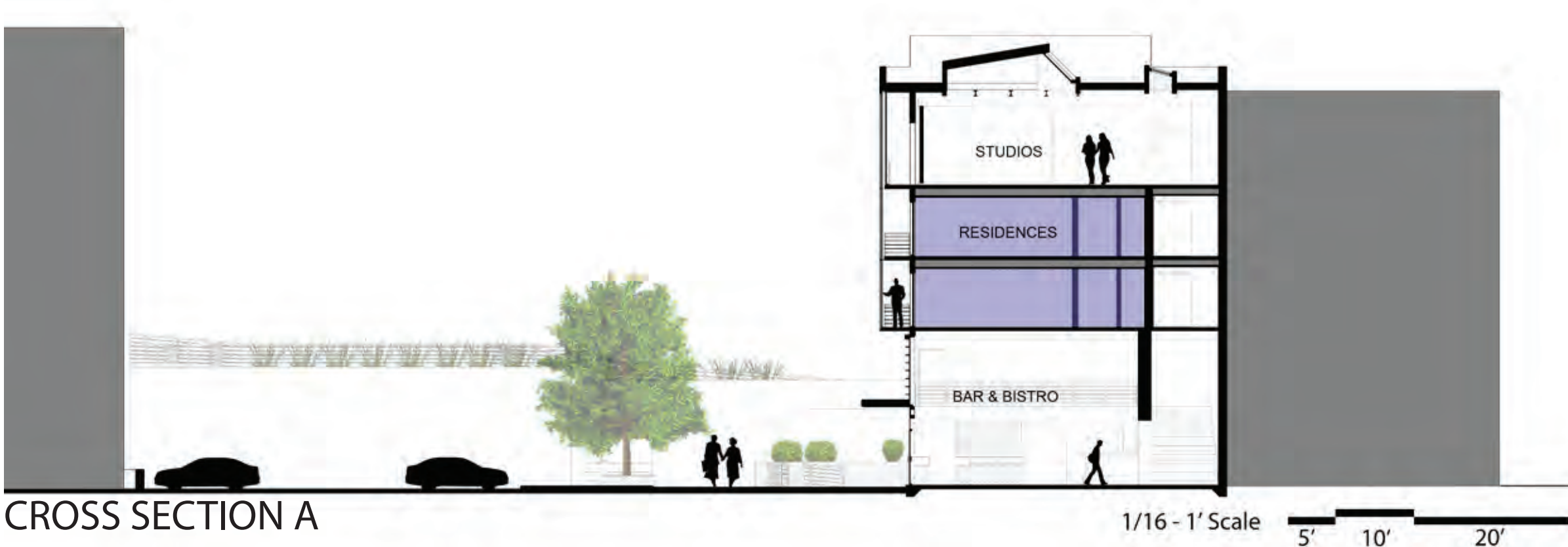
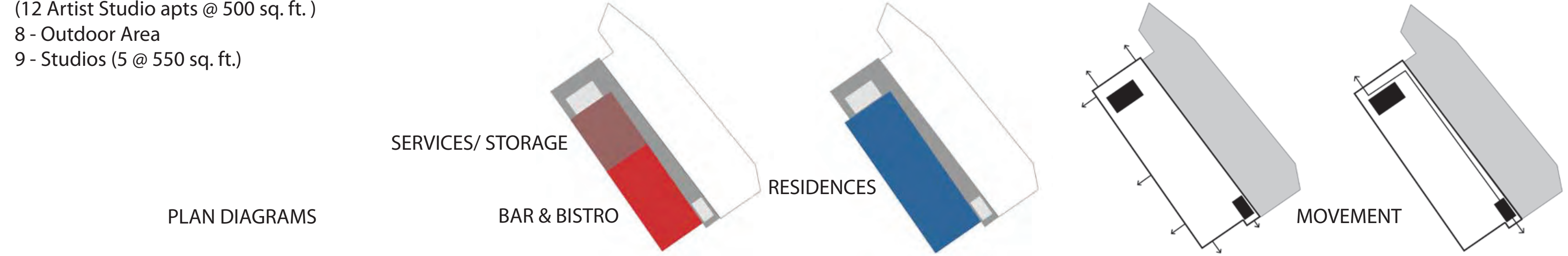
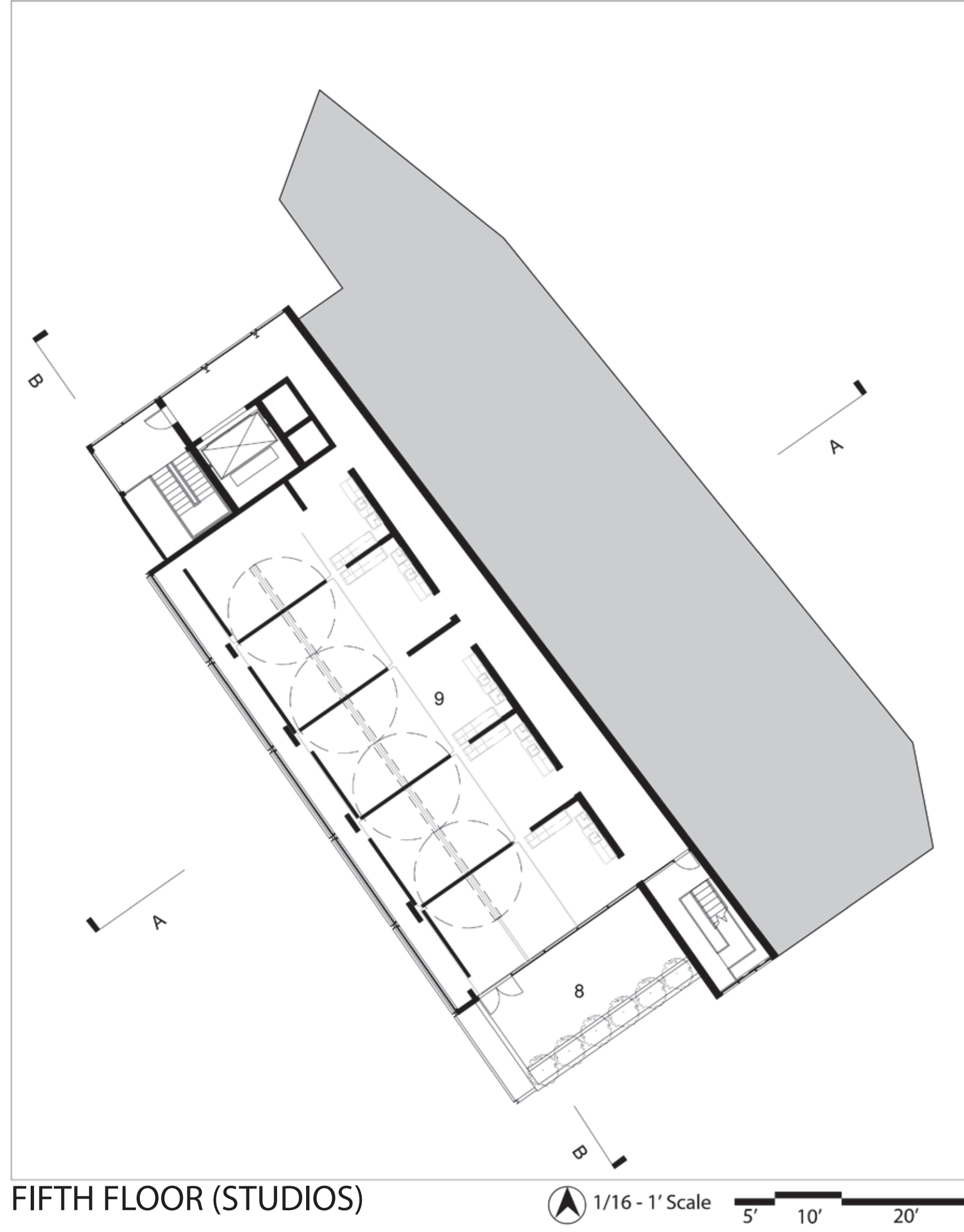
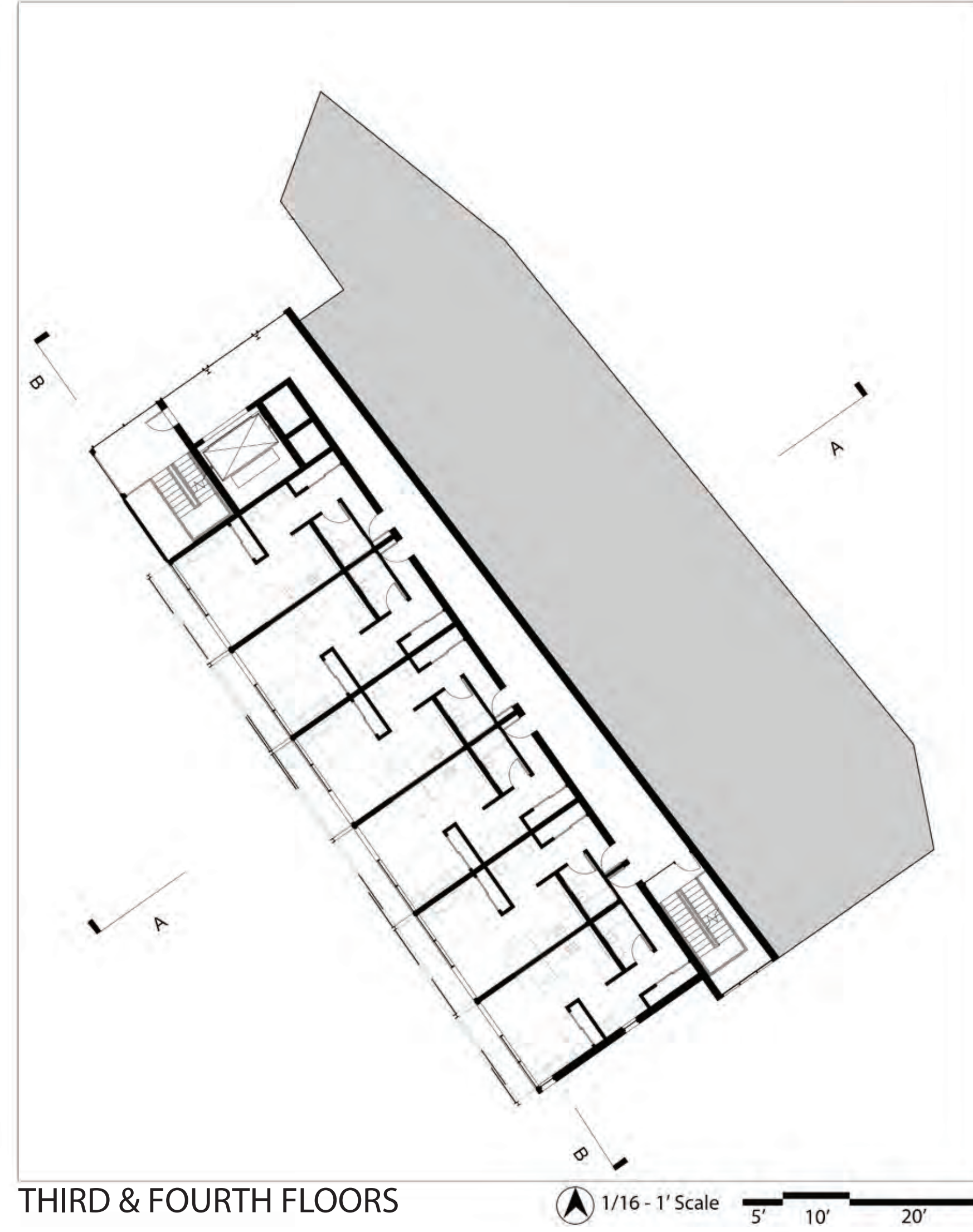
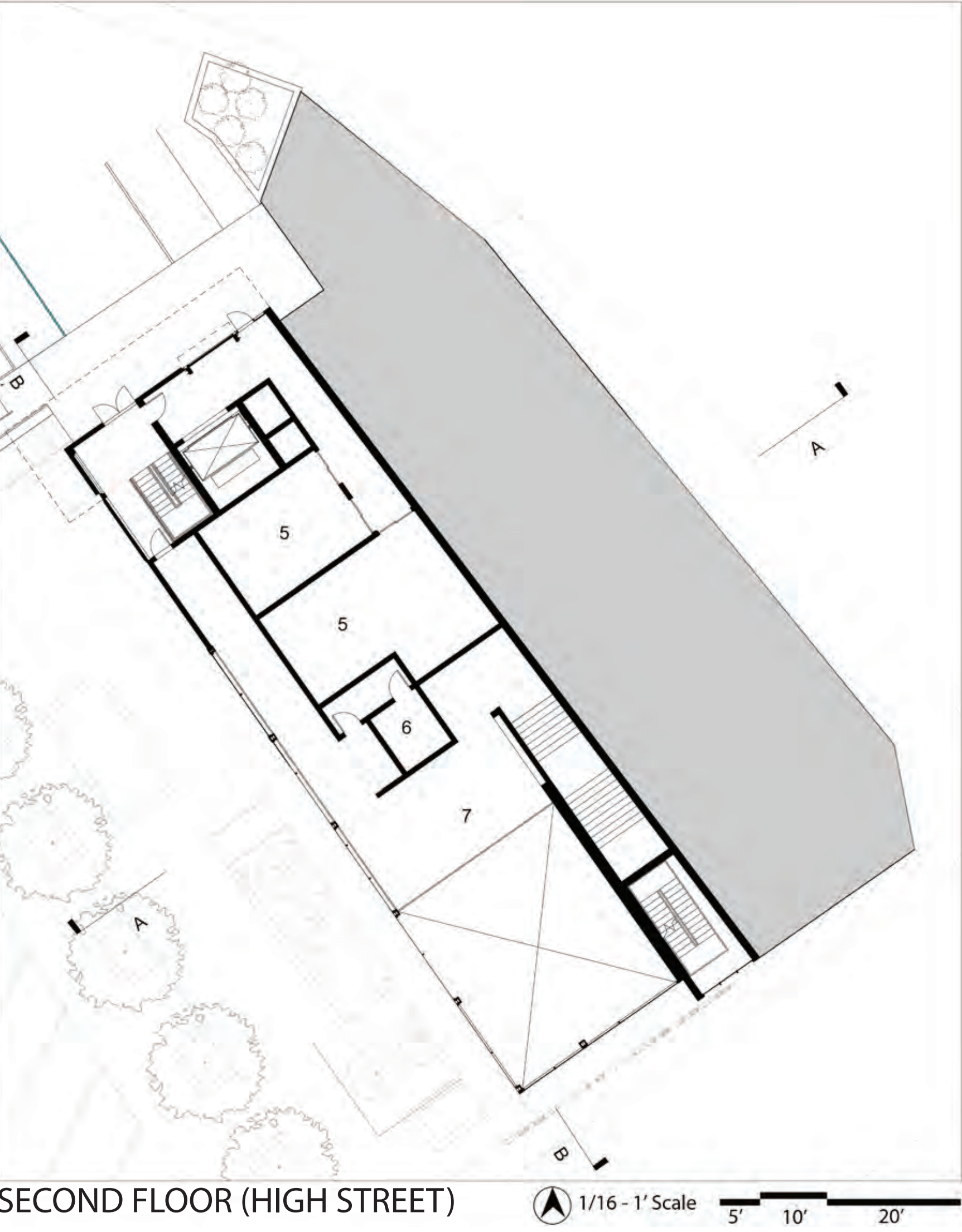
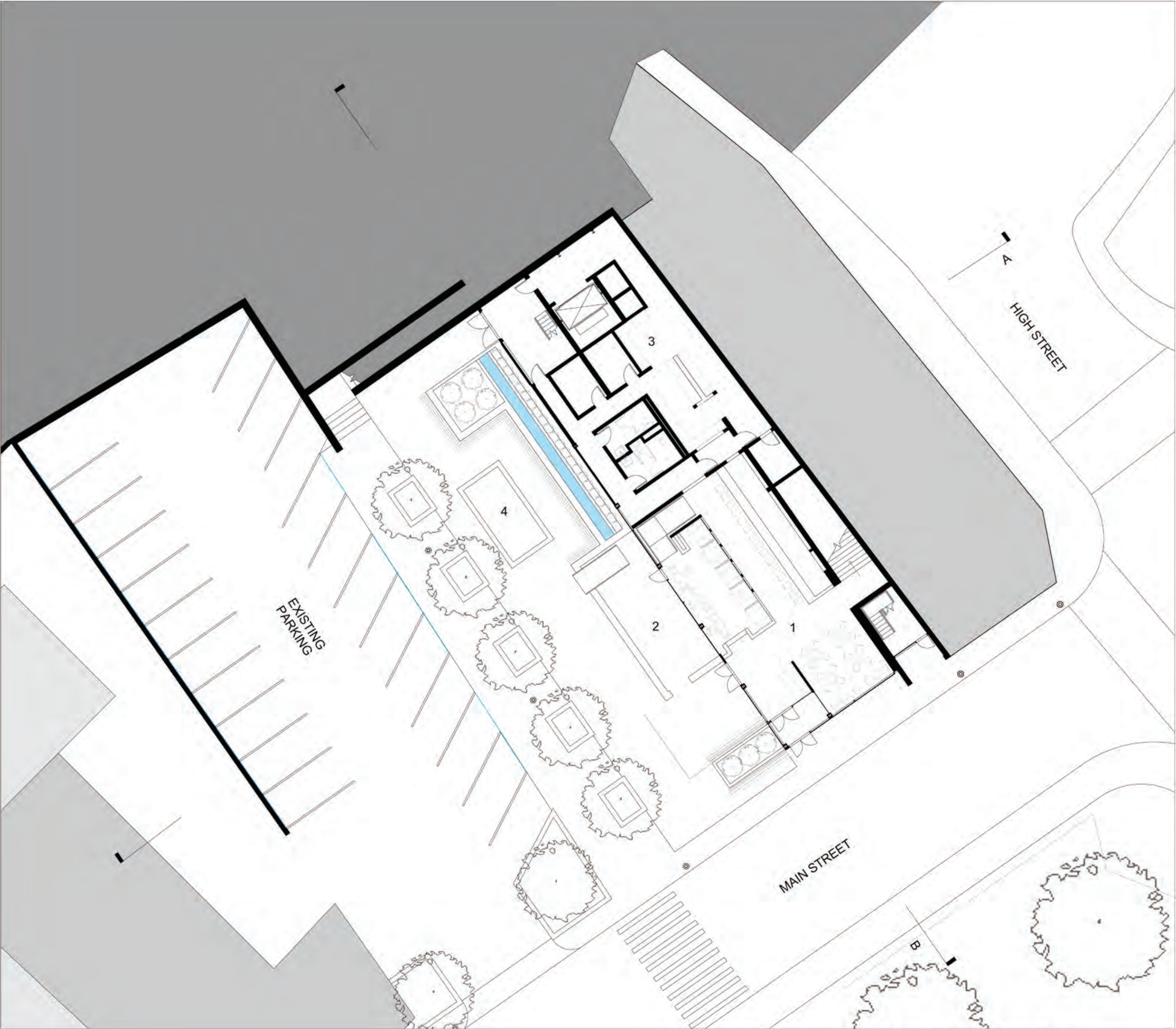


ARTIST'S RESIDENCE / BAR & BISTRO  
MAIN STREET REVITALIZATION - WOONSOCKET, RI



PROJECT DESCRIPTION:

This proposed infill is an attempt to revitalize a portion of downtown Woonsocket, RI. Part of a initial master plan proposal, the program and site was developed in detail to improve upon several conditions in the area - such as the addition of green space, improving business and economy, creating a community, and providing pedestrian connections to critical places. The infill is also designed to introduce sustainability to Woonsocket; promoting several green features such as green wall, water collection and reuse, and PV array. The site includes a small public garden space that acts as transition from the parking lots on High Street going down towards Main Street. This garden space also houses an outdoor eating area for the Bistro, as well as a sculpture area for the artists' work.



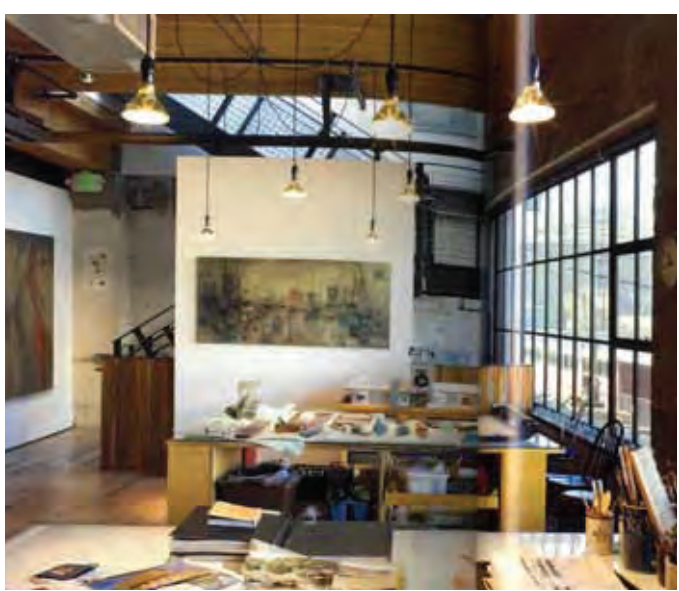
CIROS TAVERN

PROPOSED BAR & BISTRO

VINO'S BAR & BISTRO

BOILERMAKERS

RIVER FALLS BAR



PRECEDENT STUDIES

