

# TROUBLESHOOTING HDMI AUDIO

RWU Classroom and Event Support  
401-254-6363 option 2  
[mediatech@rwu.edu](mailto:mediatech@rwu.edu)

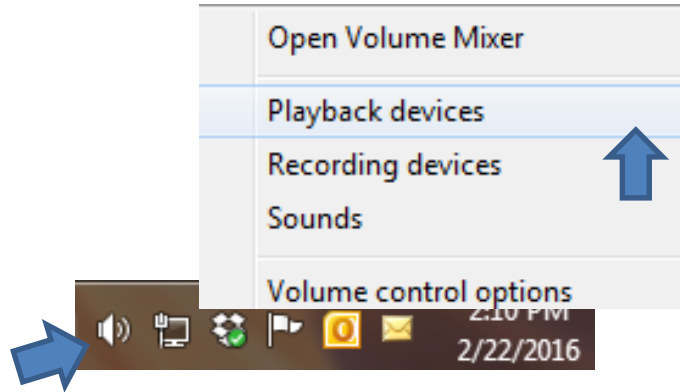
Roger Williams  
University

Information  
Technology

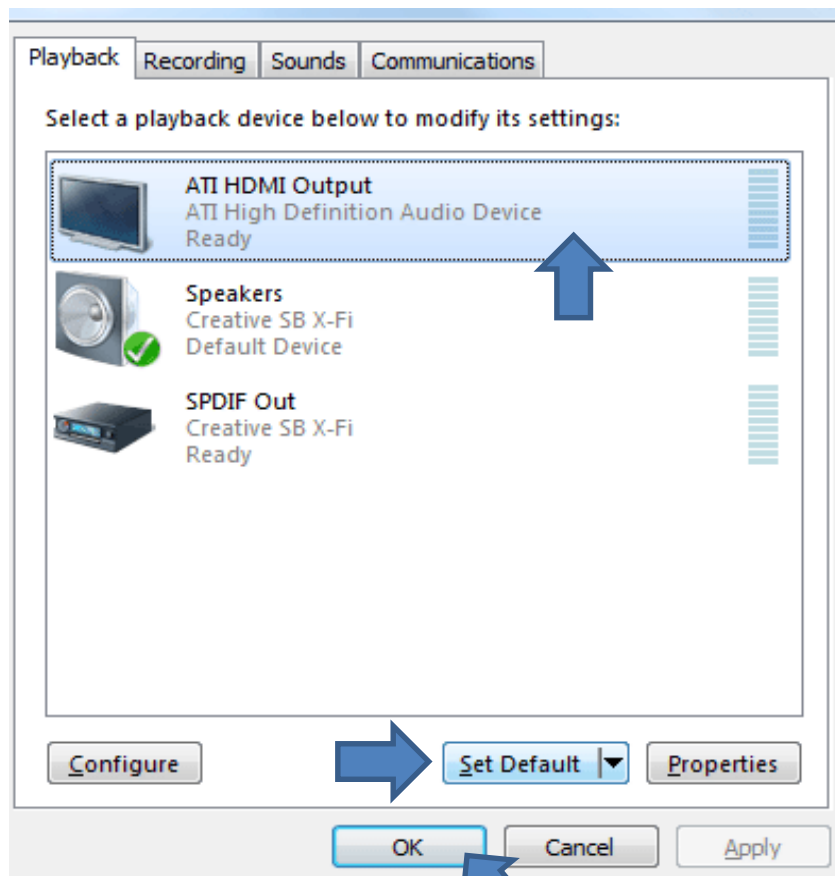
## Adjusting Audio

For PCs:

When connecting a laptop, make sure the laptop audio is going to the display. Right click on the **volume icon** located on the lower right corner of the screen. Click **playback devices**.



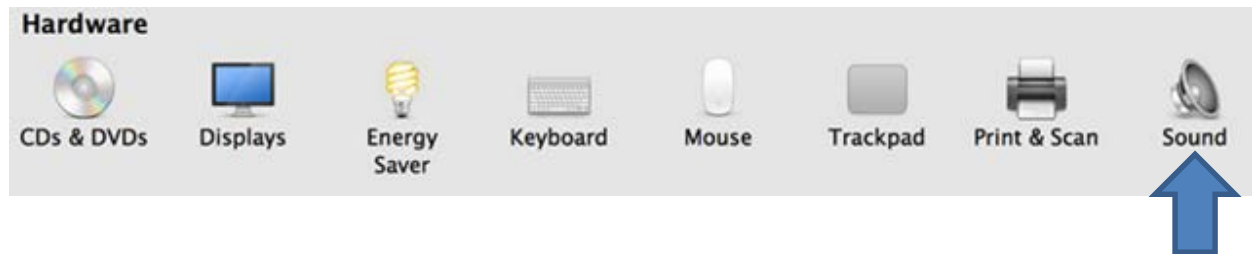
Select **HDMI output**. Click **Set Default**. Click **OK**.



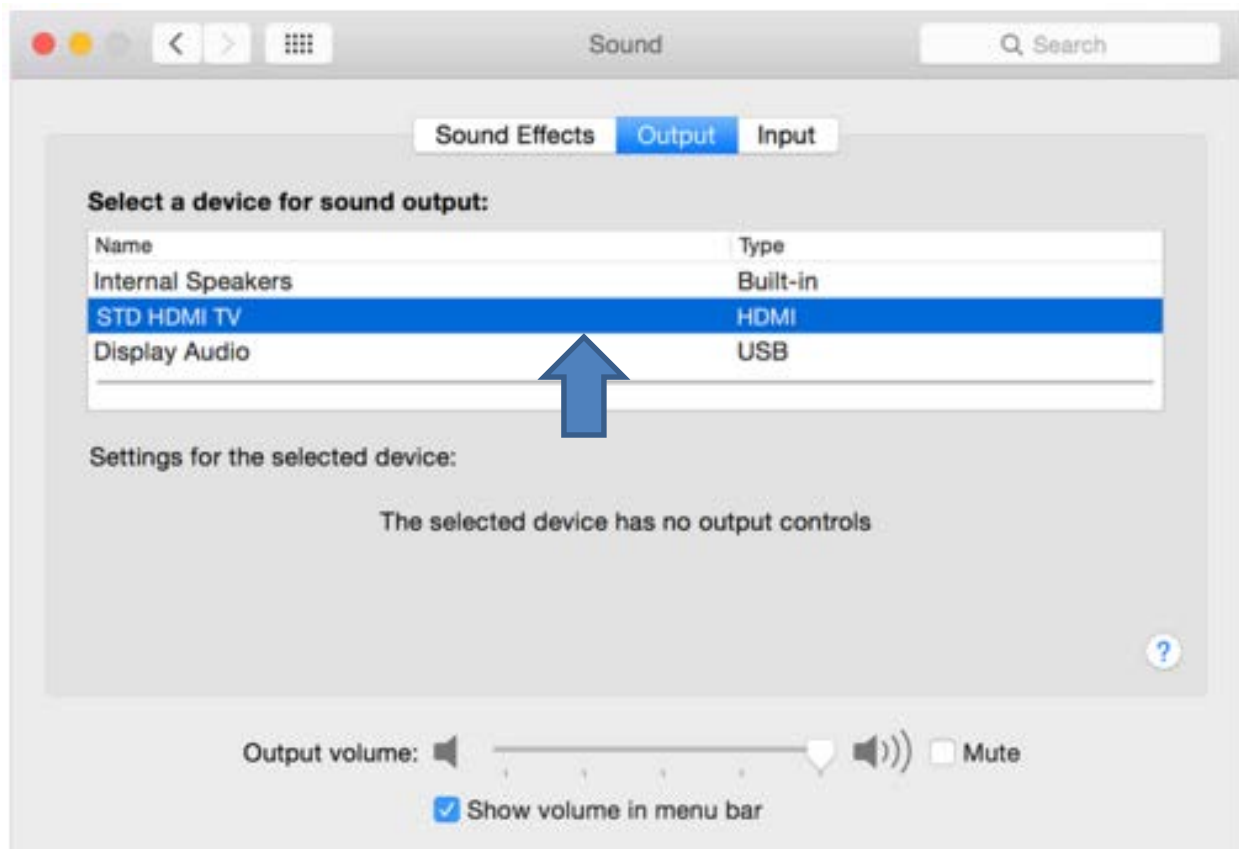
Your audio will now play from the display.

For Macs:

To adjust mac audio, click on **the Apple icon (🍏)** in the top left corner of the desktop. From the drop down menu, select **System Preferences**. From the **System Preferences** menu, click **Sound**.



In Sound options, click the **Output** tab and then select the **HDMI** source from the list.



Your audio will now play from the display