

## RWU Wireless Connection Guide

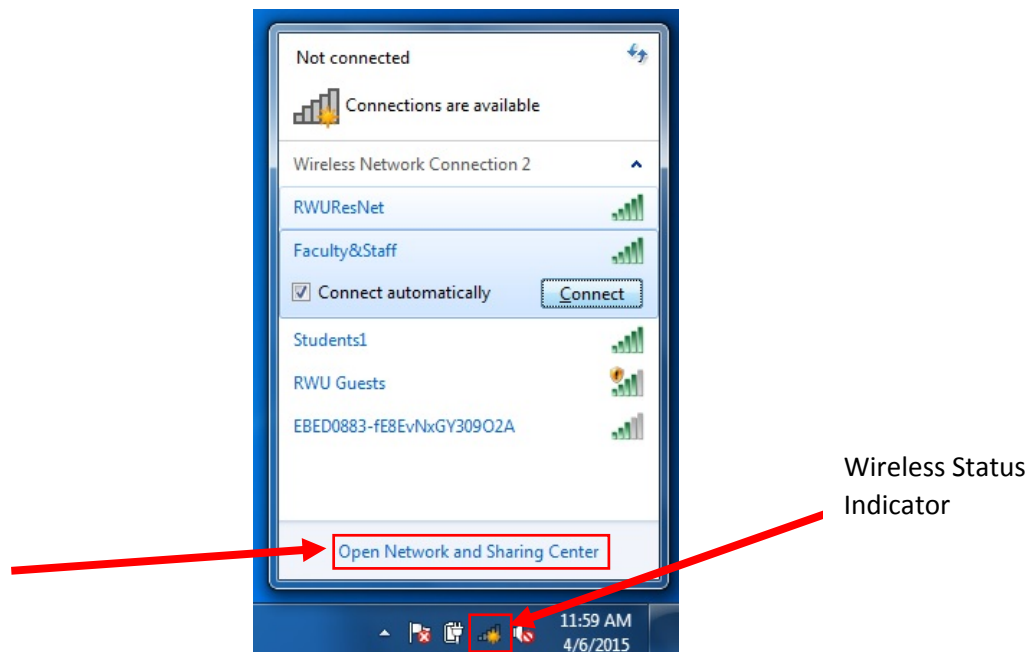
There are 5 possible networks to connect to at Roger Williams University:

Network	Users	Location	Notes
RWUResNet	Students	Residence Halls	Requires Registration and Password
Students1	Students	Academic Buildings	Requires Registration and Password
Faculty&Staff	Faculty and Staff	Academic Buildings	Requires Authentication
RWUGuest	Guest of Roger Williams University (Conference Attendees)	Conference Buildings	Restricted speed and capability
PVDEncrypyedGuest	Law Clinic Users	Providence Campus Law Clinic	Requires Authentication

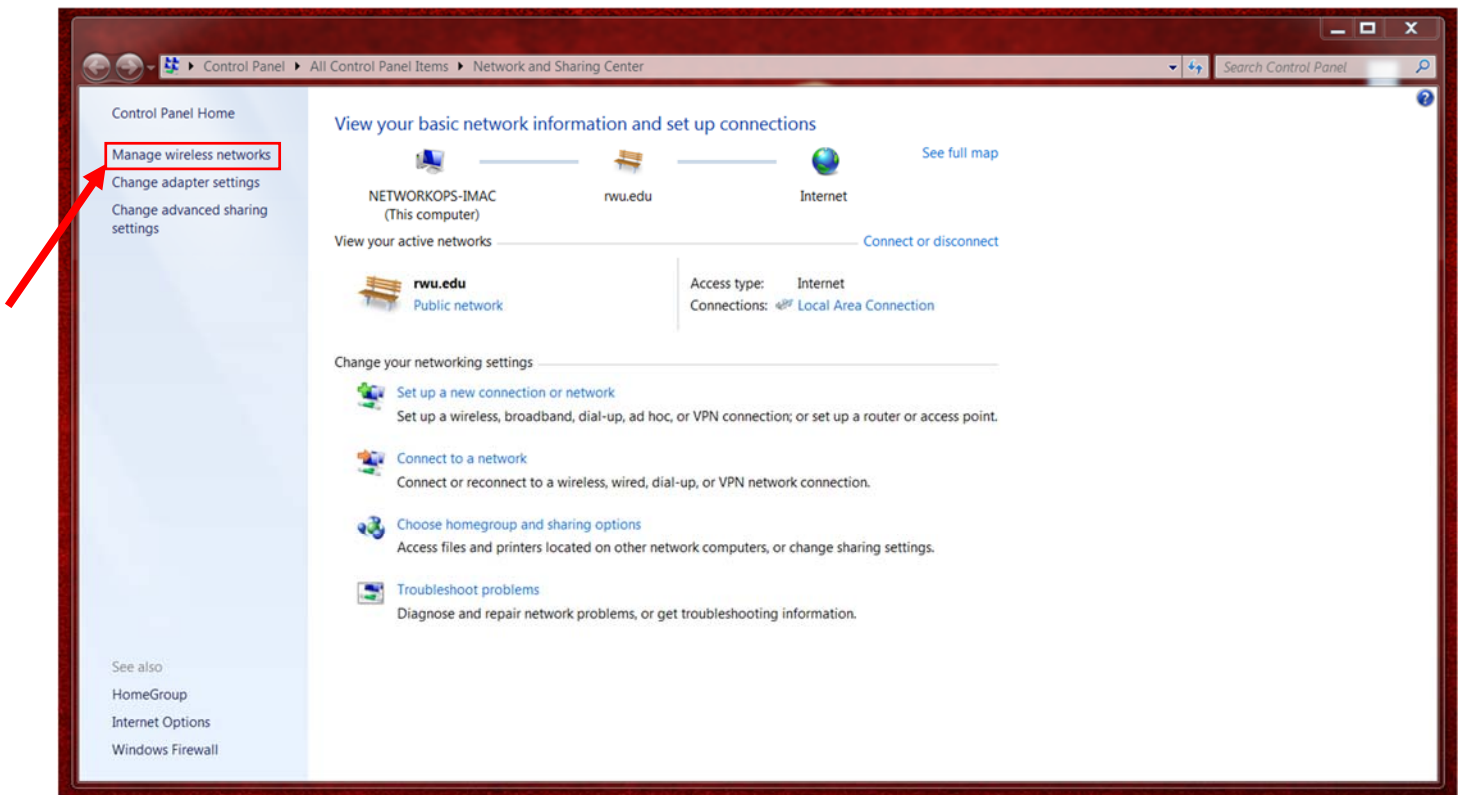
**Faculty&Staff:**

For Windows XP, Vista, and 7 please follow these procedures for **non-RWU issued laptops**:

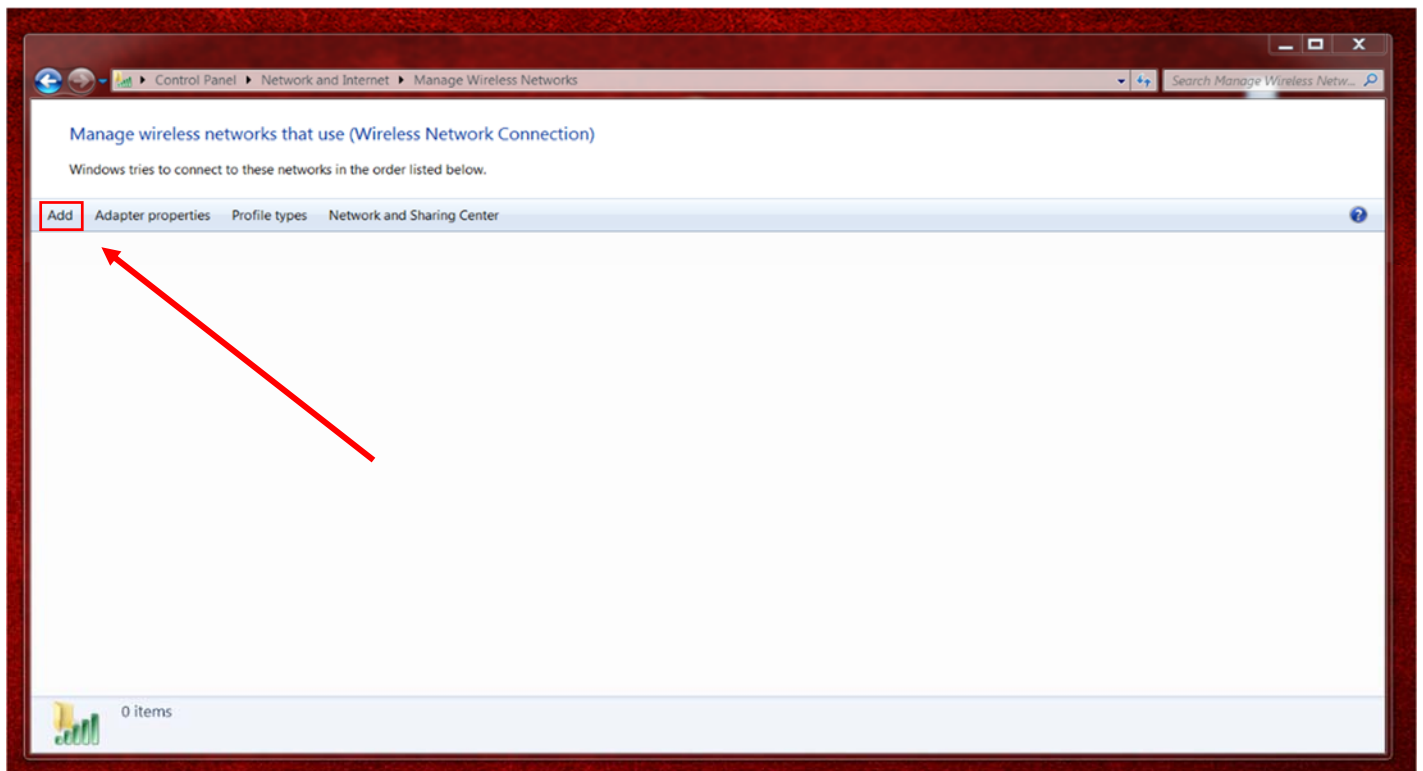
Click on the “Wireless Status Indicator” icon located in the bottom right-hand corner of the screen in the Task Bar and click on “Open Network and Sharing Center”:



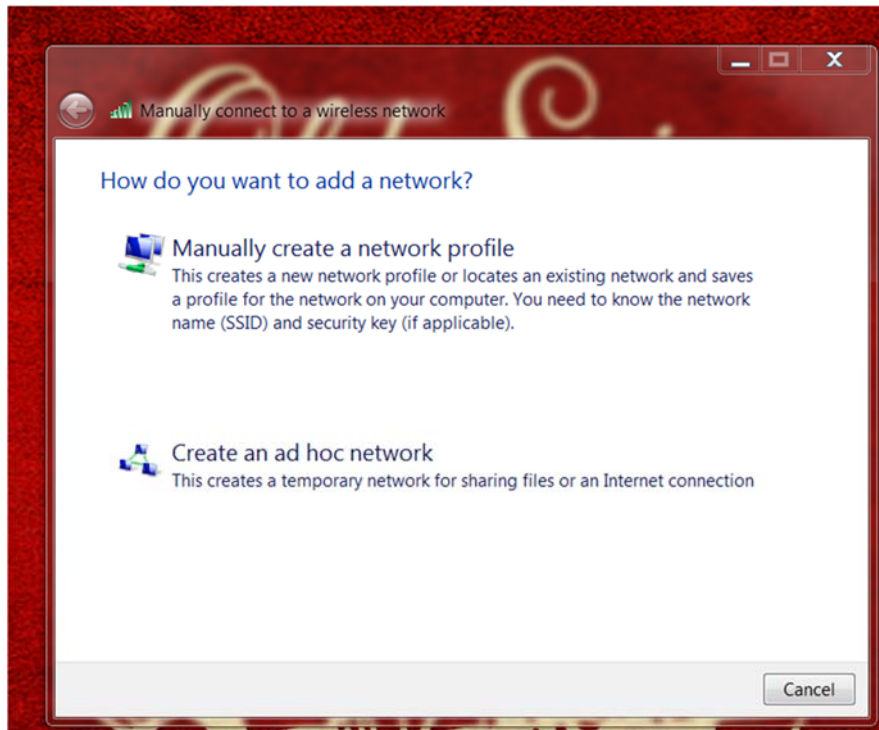
Click on “Manage wireless networks” on the left-hand side of the screen:



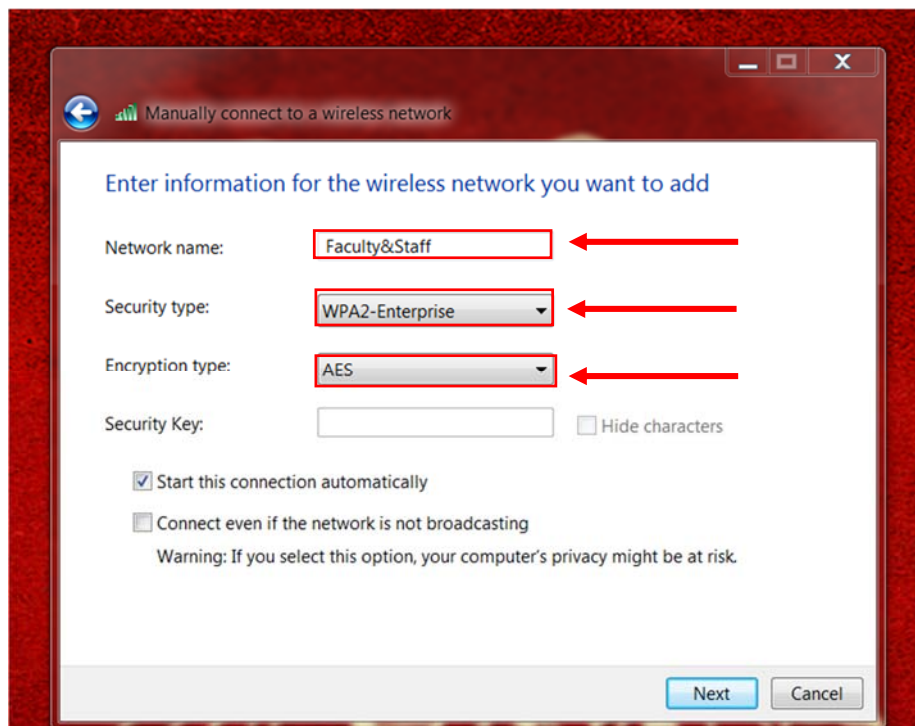
Click the “Add” button located on the left side of the screen to add the “Faculty&Staff” network:



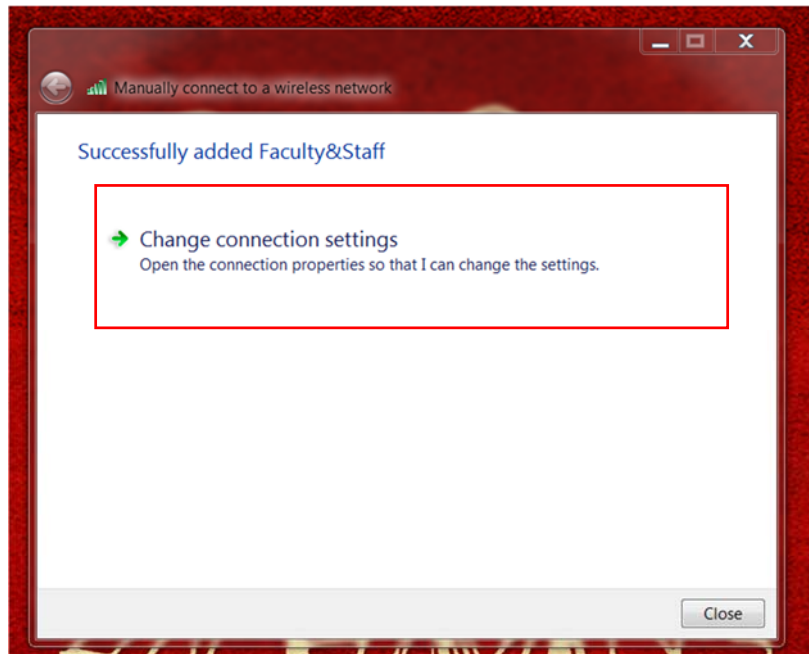
Select the option to “Manually create a network profile”:



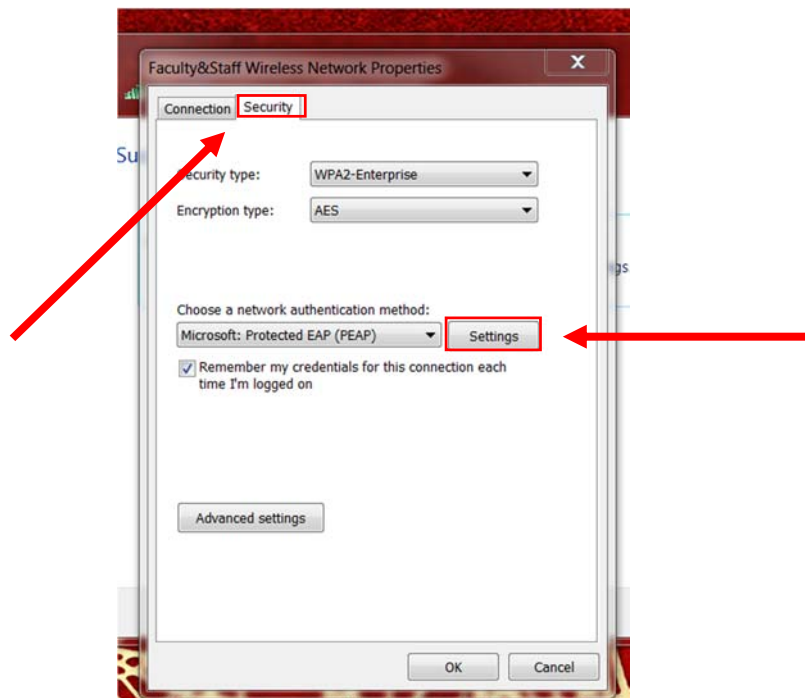
When prompted with the screen below, in the “Network name” field, type in “Faculty&Staff”. For the drop down menu in the “Security Type” field, select “WPA2-Enterprise”. For the drop down menu for “Encryption Type”, select “AES”. When all of the fields have been correctly filled, click “Next”:



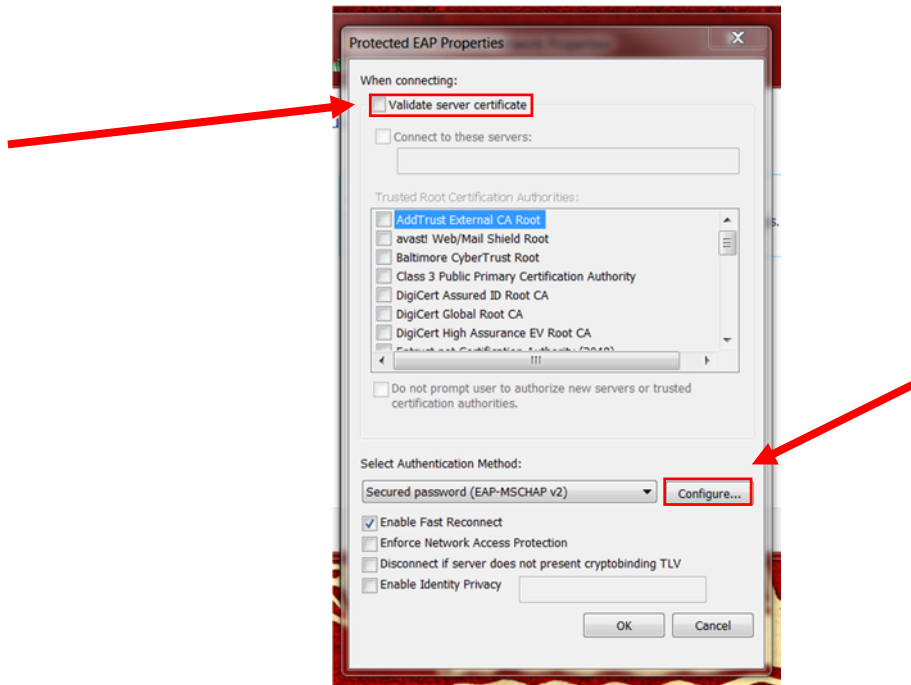
Click on the option to “Change Connection Settings”:



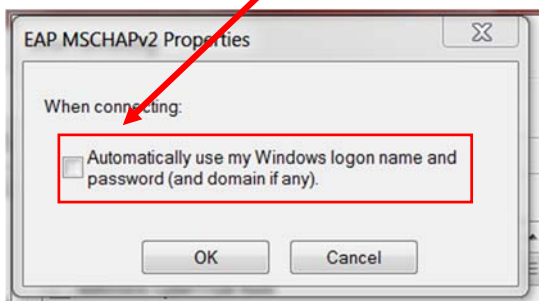
Click on the “Security” tab located on the right in the “Faculty&Staff Wireless Network Properties Screen”. Then click on the “Settings” button located next to the drop-down menu “Microsoft: Protected EAP (PEAP)”:



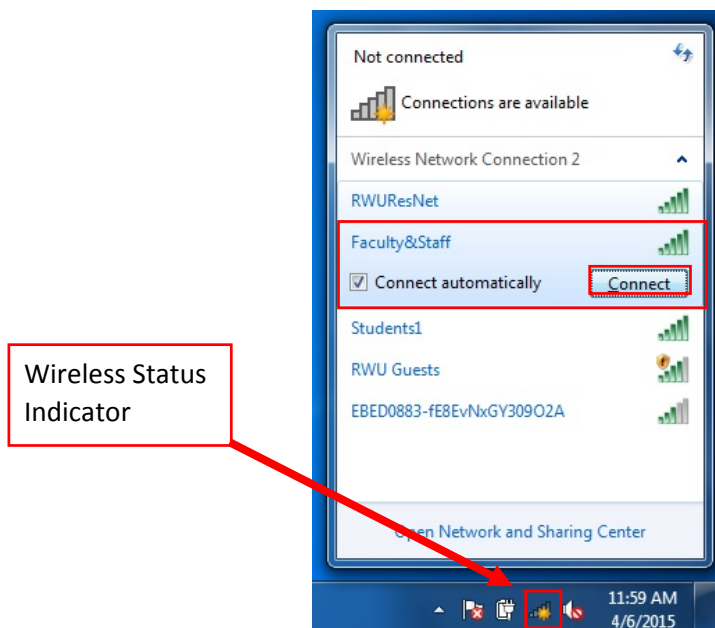
Uncheck the box labeled “Validate server certificate” at the top of the “Protected EAP Properties” window. Then click the button labeled “Configure” next to the drop-down menu labeled “Secured Password (EAP-MSCHAP v2)”:



When prompted with the screen below, uncheck the box labeled “Automatically use my Windows logon name and password (and domain if any)”:



Click on the “Wireless Status Indicator” icon located in the bottom right-hand corner of the screen in the Task Bar. Then click on the “Faculty&Staff” network option and click “Connect”:



Enter your credentials when prompted with the screen below. Your credentials will be either "academics\" or "rwu\" followed by the first initial of your first name and your full last name for all Faculty with the exception of Education or 'rwu\' for Staff. For example: academics\jsmith. This should allow you access to the 'Faculty&Staff' network.

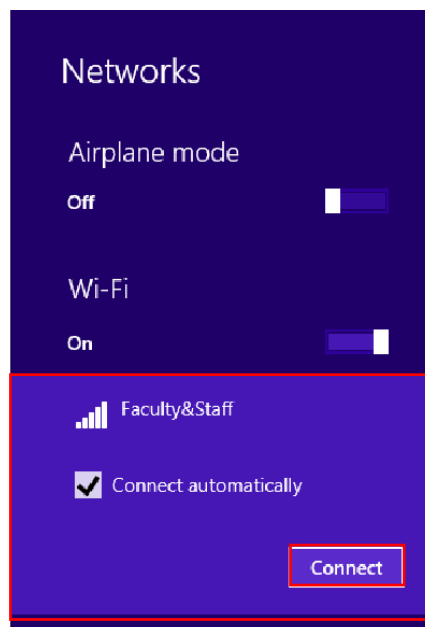


## For Windows 8:

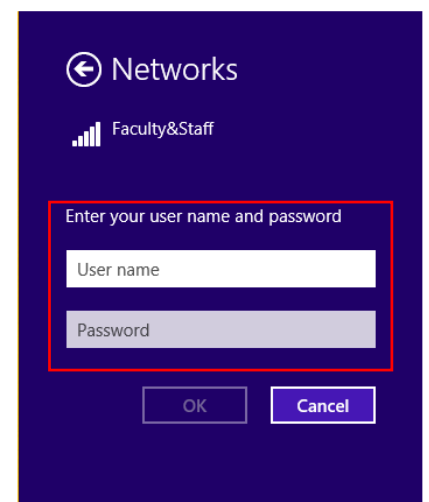
Click on the "Wireless Status Indicator" icon located in the bottom right-hand corner of the screen:



Click on the "Faculty&Staff" network and click "Connect":

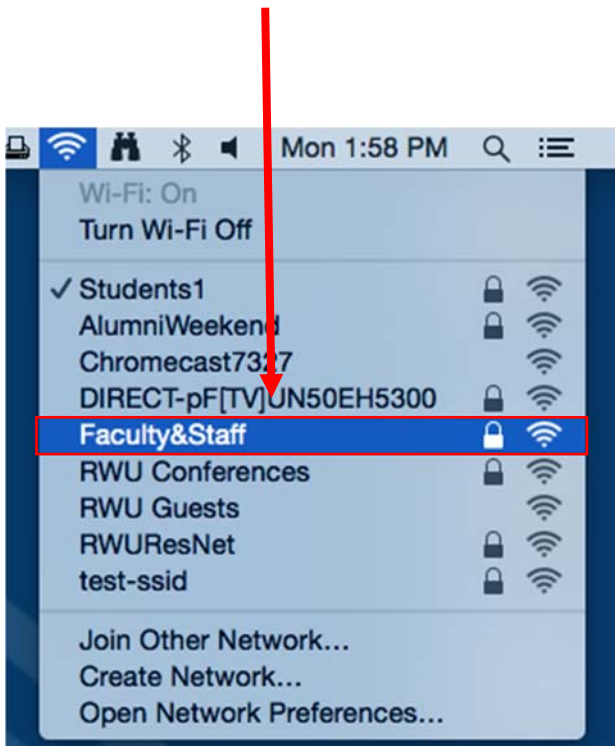


Enter your credentials when prompted with the screen below. Your credentials will be either "academics\" or "rwu\" followed by the first initial of your first name and your full last name for all Faculty with the exception of Education or 'rwu\' for Staff. For example: academics\jsmith. This should allow your access to the 'Faculty&Staff' network



### For Macs:

Click on the “Internet Access” icon located in the task bar in the top right-hand corner of the screen. Select the “Faculty&Staff” option:



Enter your credentials when prompted with the screen below. Your credentials will be either “academics\” or “rwu\” followed by the first initial of your first name and your full last name for all Faculty with the exception of Education or ‘rwu\’ for Staff. For example: academics\jsmith. This should allow you access to the ‘Faculty&Staff’ network.

