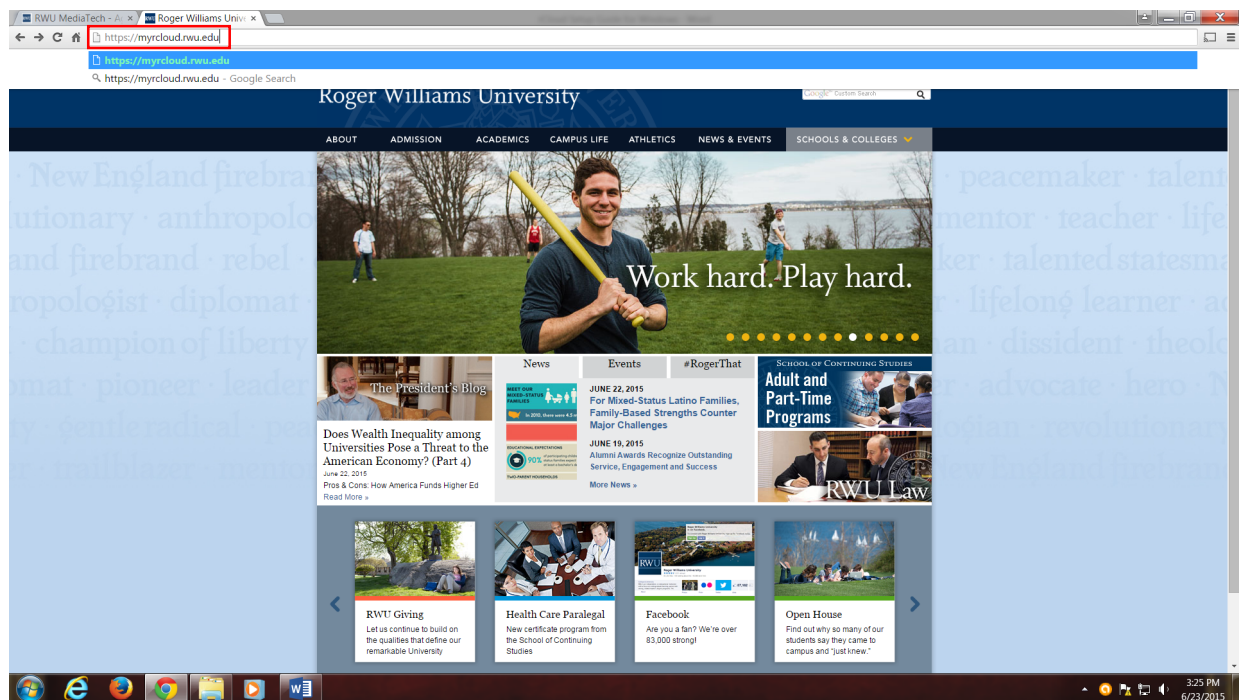


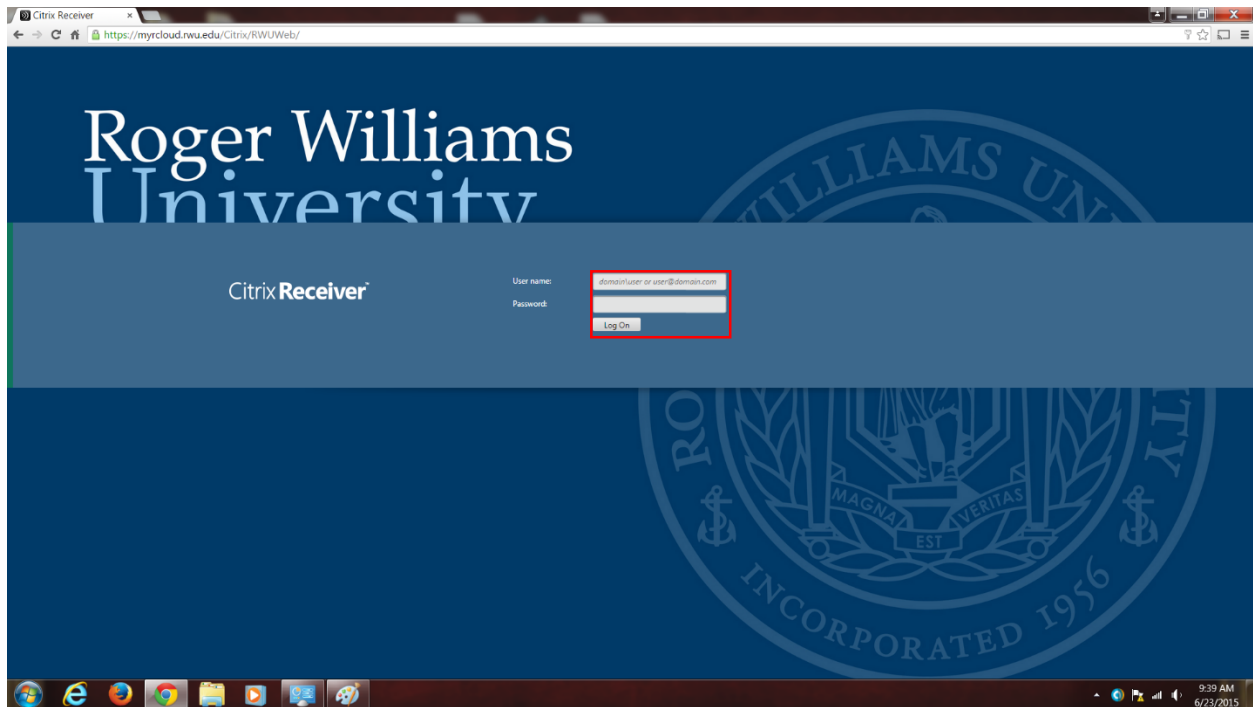
rCloud Setup Guide for Windows:

Note: The latest Google Chrome is required to run rCloud. If you do not already have it, you can download it from <https://www.google.com/chrome/browser/desktop/index.html>. To update Chrome, click the tab in the upper right hand corner of the window, click **“settings”**, then click **“about”** located in the side pane of the settings windows. Chrome will then automatically search for an update.

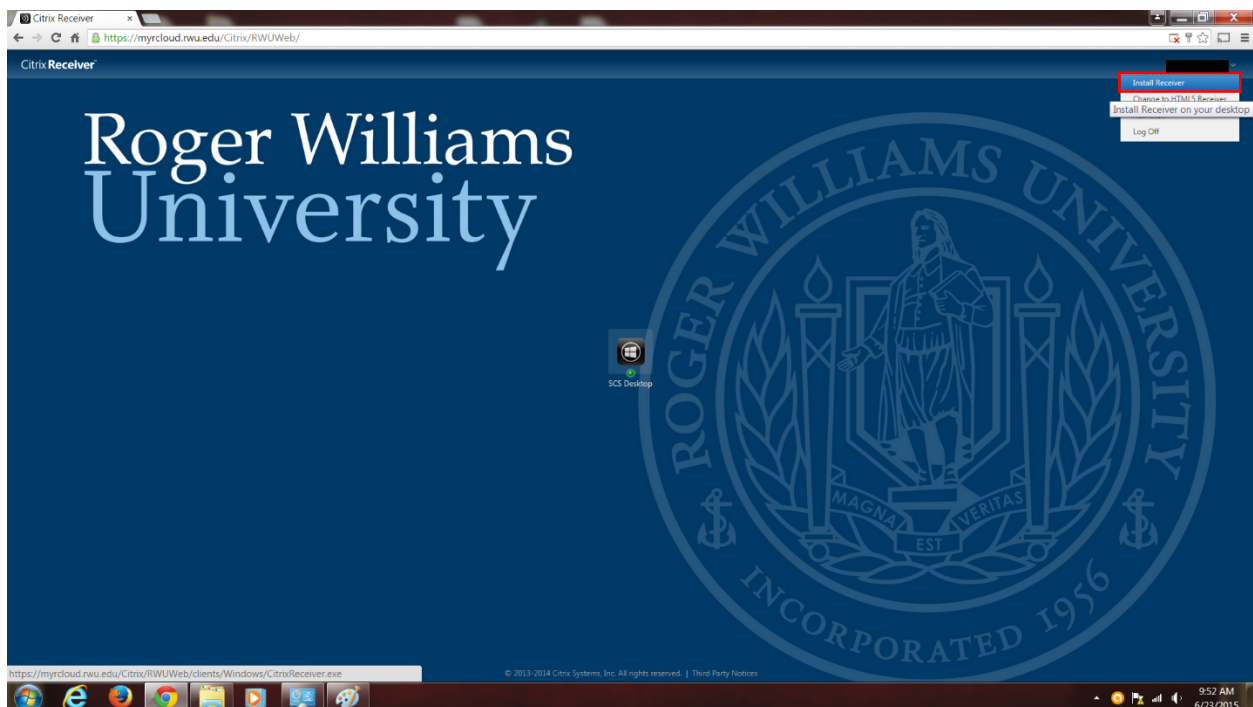
To begin, navigate to <https://myrcloud.rwu.edu> in Google Chrome. Once you have entered this into the URL bar, press enter, and you will be directed to the Citrix Receiver login page.



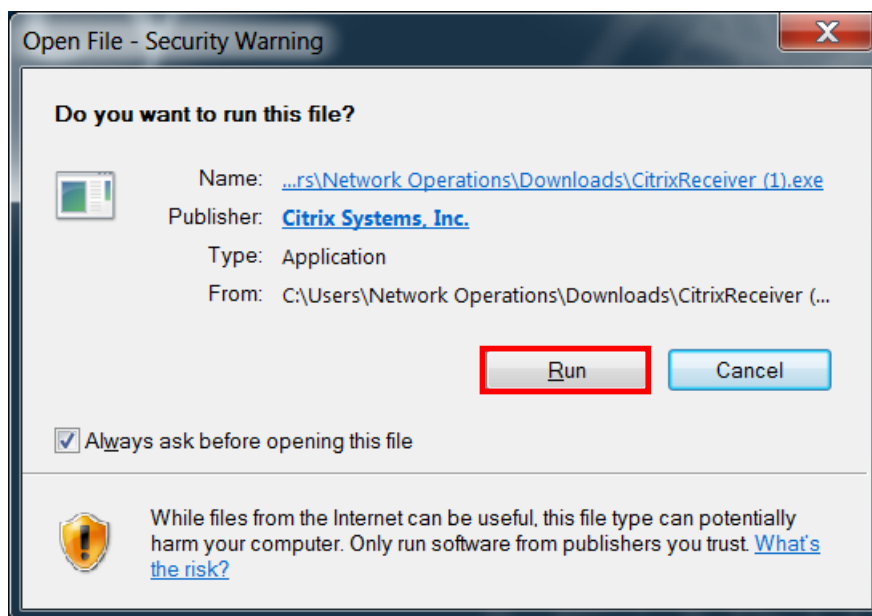
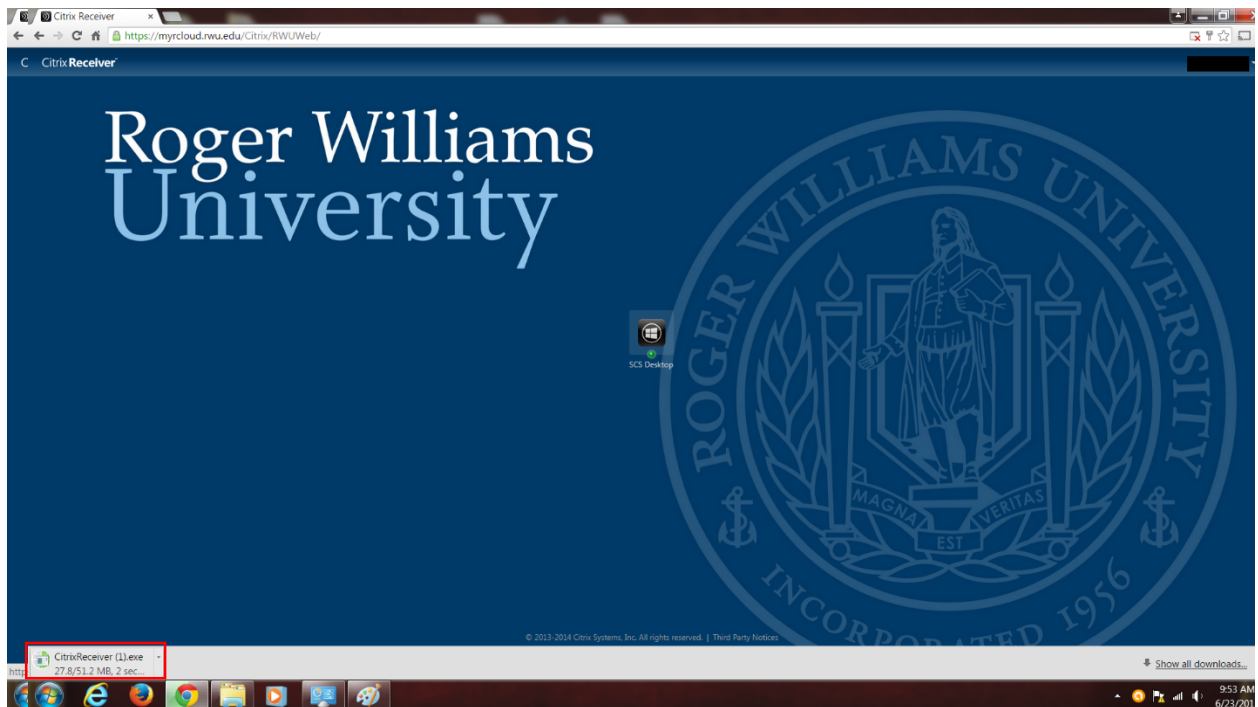
Enter your username and password. Your username will be the same as it is for the RWU Portal (ie. Jsmith123@academics.rwu), and your password will be the same as your portal password.



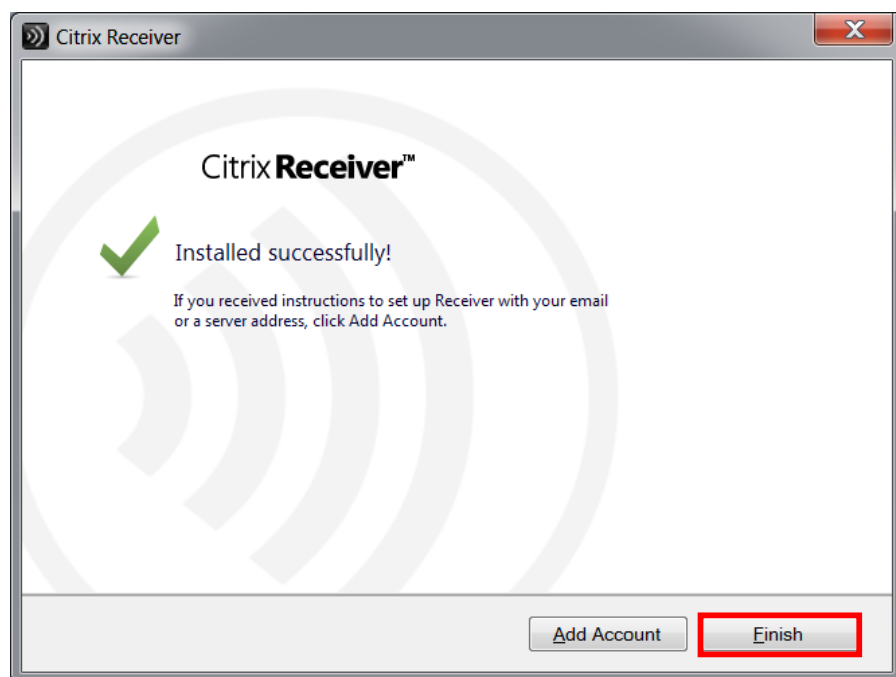
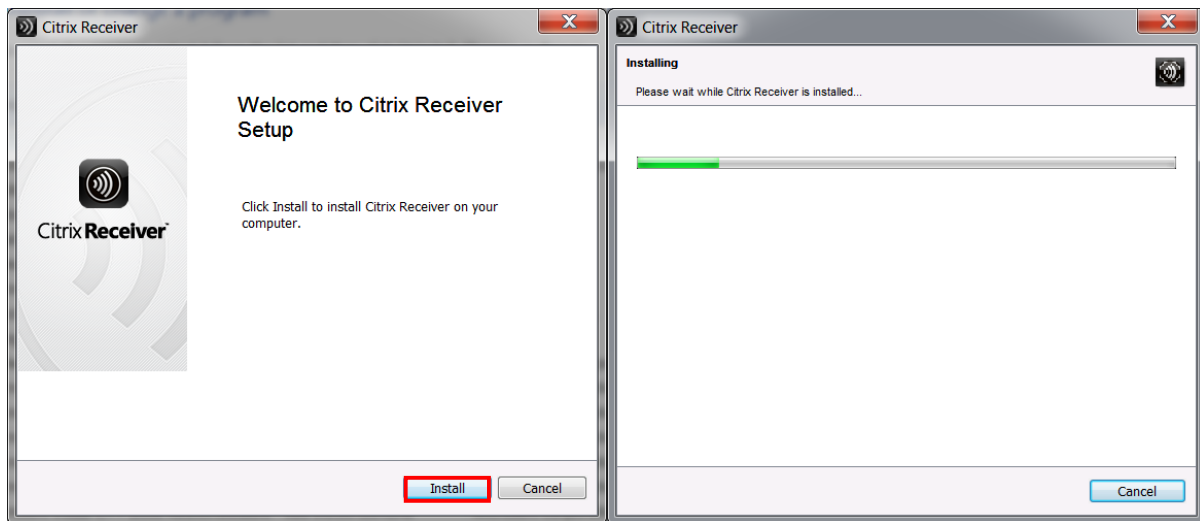
Once you are logged in, click the arrow next to your username and select “Install Receiver”. This will install the Citrix Receiver on your Windows desktop.



Once the download has finished, click the “CitrixReceiver” file you have downloaded in the download bar. This will open a dialogue asking whether you want to run the Citrix file. Click “Run” to begin the installation.

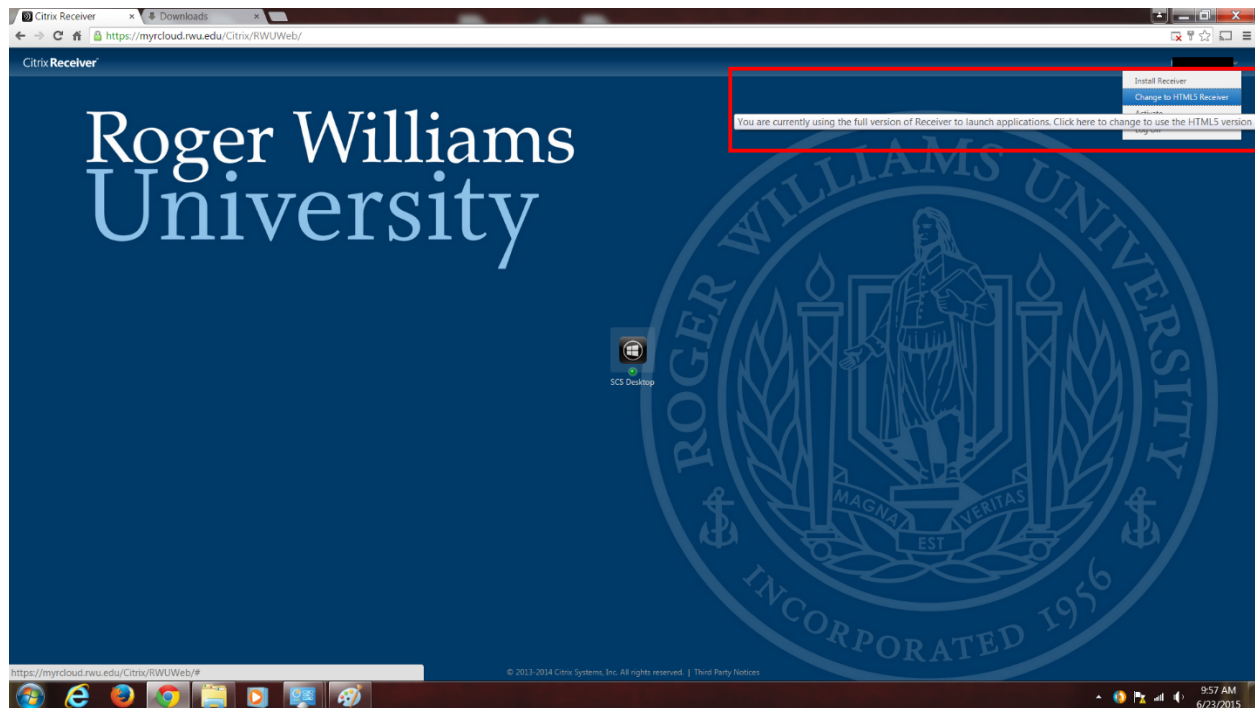


Once the installation wizard for the Citrix Receiver appears, click Install. This will install the receiver. Once it is done, you will be notified that it has completed. Click "Finish". After it has finished, navigate back to the rCloud page in Google Chrome.

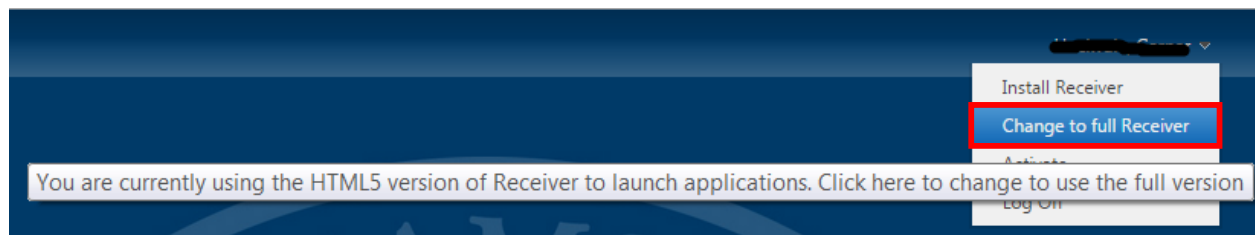


On the Citrix Receiver webpage, ensure that you are using the full version of receiver. To do this, click the arrow next to your username at the top right hand corner of the screen, and hover over the "Change

to HTML5 receiver” option. A popup should appear identical to the image below stating that you are using the full version.



If you are not using the Full Receiver, the menu will look like the image below. Under the drop down menu, select “Change to full Receiver”.



This will open the Citrix Receiver installed earlier, and automatically open your rCloud session.

