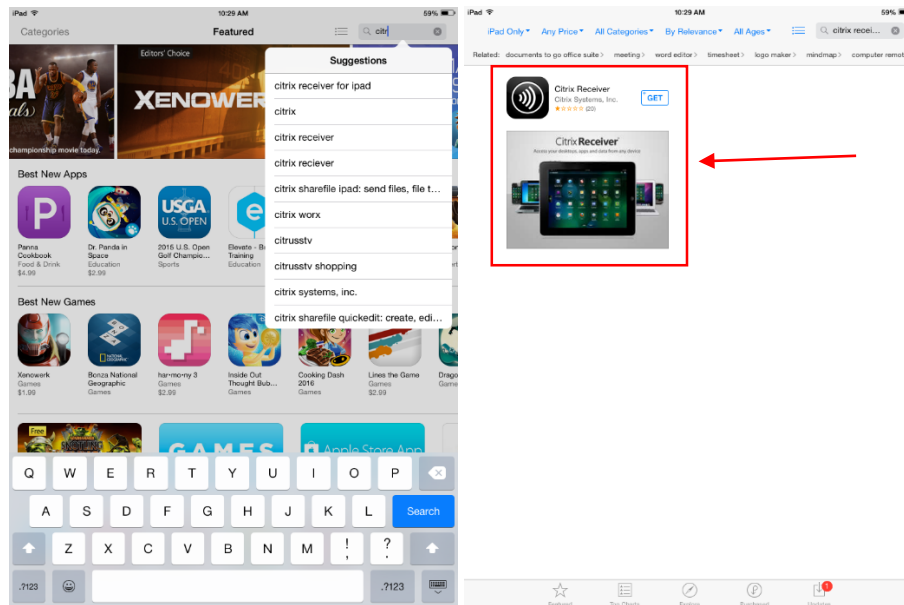
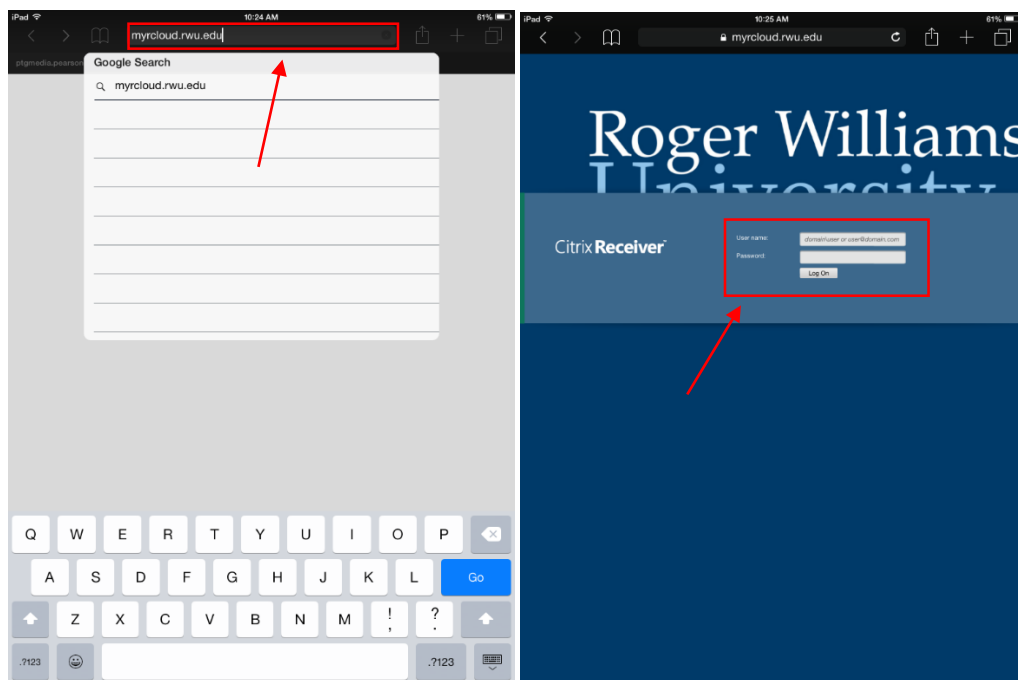


# rCloud Setup Guide for Apple iOS:

To begin, open the App Store and search for “Citrix Receiver”. Download the “Citrix Receiver” app.



Next, open your internet browser and navigate to “myrcloud.rwu.edu”. Enter your username that you would use to access RWU Portal (ie. [j.smith@academics.rwu](mailto:j.smith@academics.rwu)), and the password that you use for every other RWU service.



Once you have entered your username and password, select the icon for the rCloud desktop located in the center of the screen. Once you select this icon, you will be prompted to download a file. Select "Open in Receiver". Selecting this will automatically open the Citrix app which you downloaded earlier and launch your remote desktop.

