



# CLASSROOM TECHNOLOGY GUIDE

RWU Classroom and Event Support  
401-254-6363 option 2  
[mediatech@rwu.edu](mailto:mediatech@rwu.edu)

*LAW*  
*BayView*

Roger Williams  
University

Information  
Technology

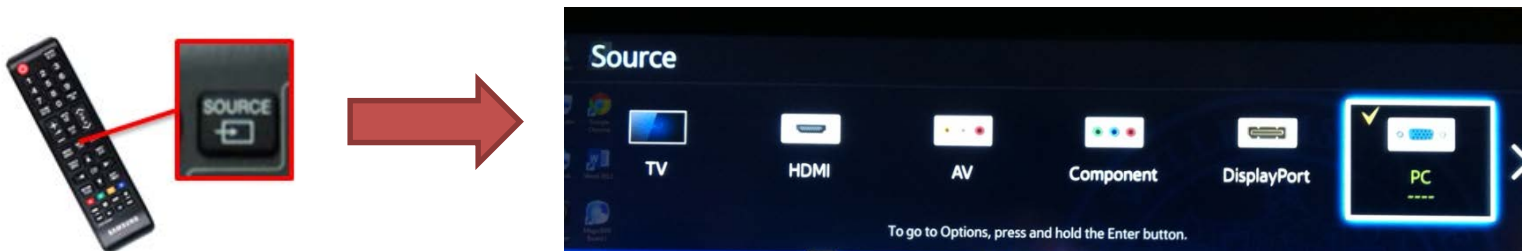
In the Samsung display rooms you will find a **Samsung display and remote**, a **Lenovo computer located behind the TV**, a **wireless mouse and keyboard** to use with the Lenovo PC, and a **HDMI connection**.

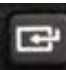
To power on the display, press the **Red Power button** on the remote. The display will show the last source that was selected.



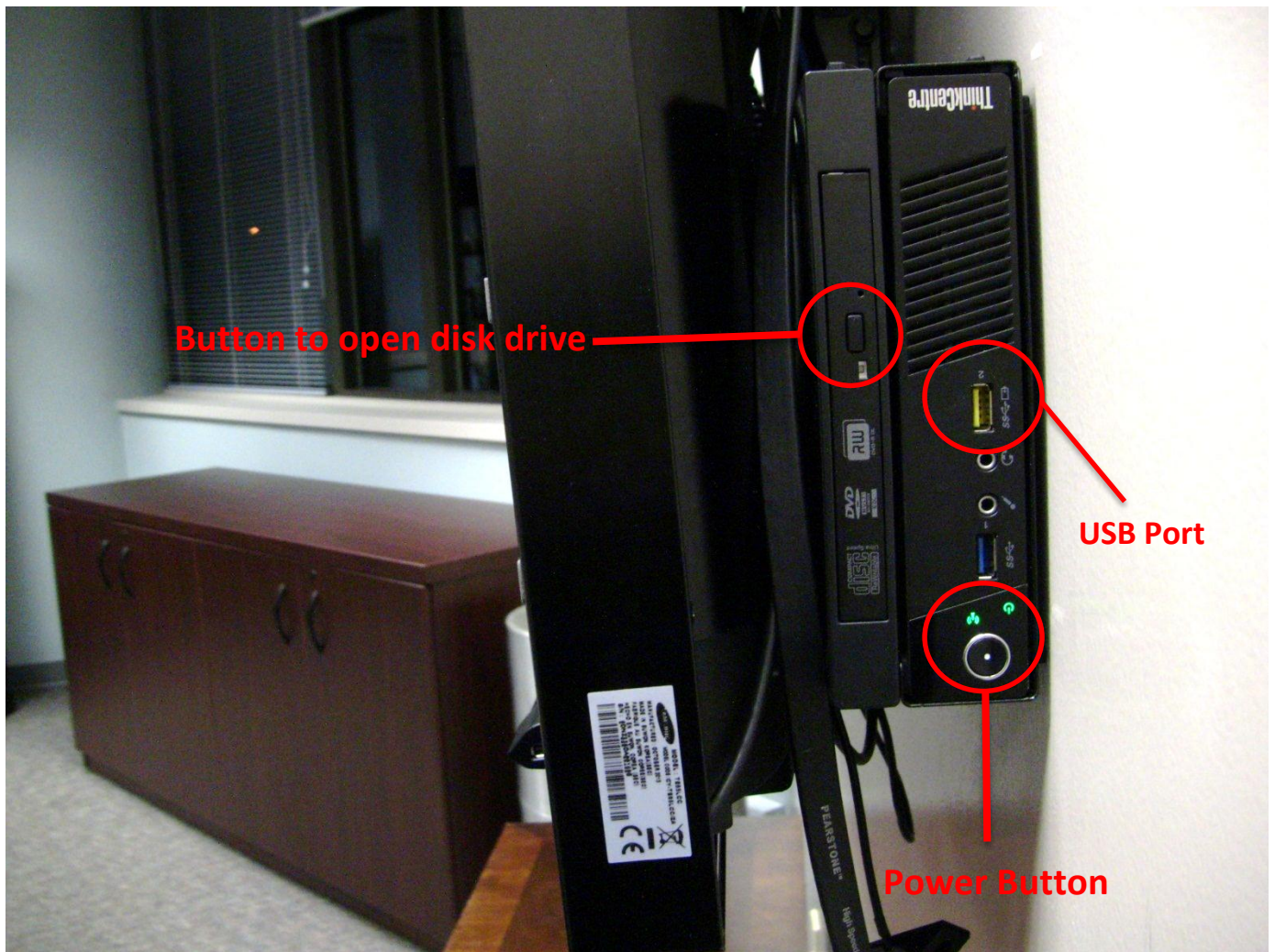
## Using Lenovo PC

To display the Lenovo PC, press the **source** button on the remote. The source menu will show on the display screen.



Then, use the ◀▶ arrows on the remote to select **PC** and hit enter. 





If the PC is not powered on, press the **power button** located on the front of the PC. The power button will light up **green** when turned on.

If you wish to play a DVD, there is a disk drive located on the Lenovo PC. To open, press **the Black button** on the disk drive. Insert disk and close. The DVD will load onto the computer automatically.

## Connecting a laptop

To connect a laptop to the system, use the **HDMI** cord connected to the Samsung display. The cord is located behind the display. Plug the HDMI cord into your laptop.



To power on the display, press the **Red Power button** on the remote. The display will show the last source that was selected.



Press the **source** button on the remote. The source menu will show on the display screen.



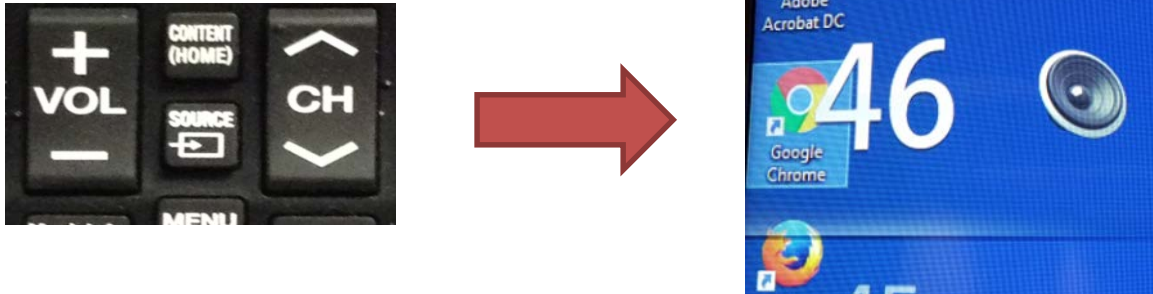
Use the ◀▶ arrows to select **HDMI**. Then, press enter. 



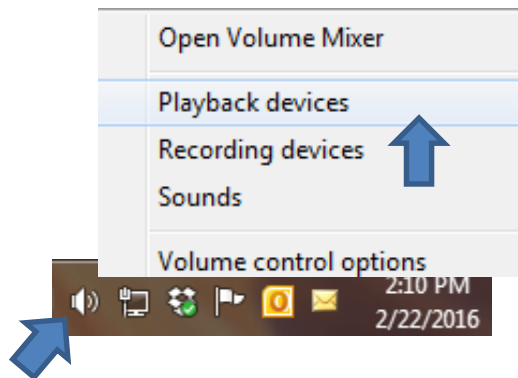


## Adjusting Audio

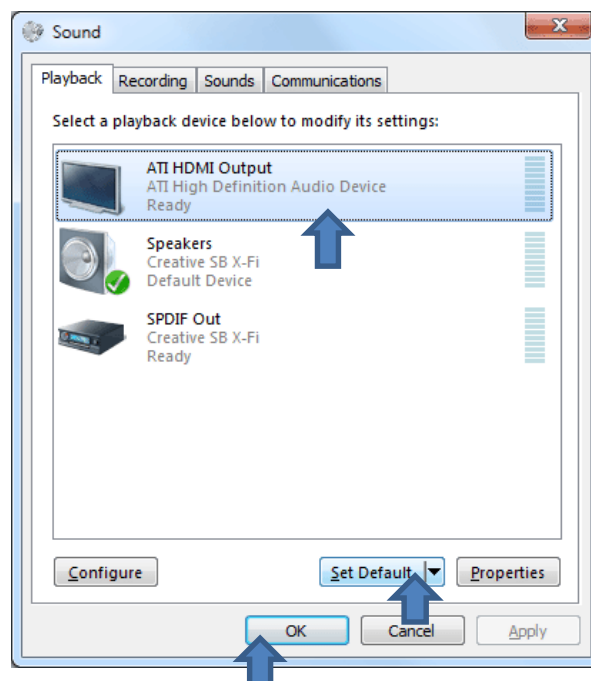
If you need to adjust the volume of the display, simply use the remotes **Volume up and down buttons**. The volume level number will appear on the left side of the display.



When connecting a laptop, make sure the laptop audio is going to the display. Right click on the **volume icon** located on the lower right corner of the laptop desktop. Click **playback devices**.

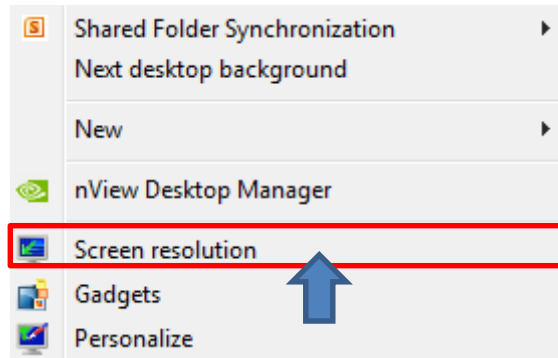


Select HDMI output. Click Set Default. Click OK.



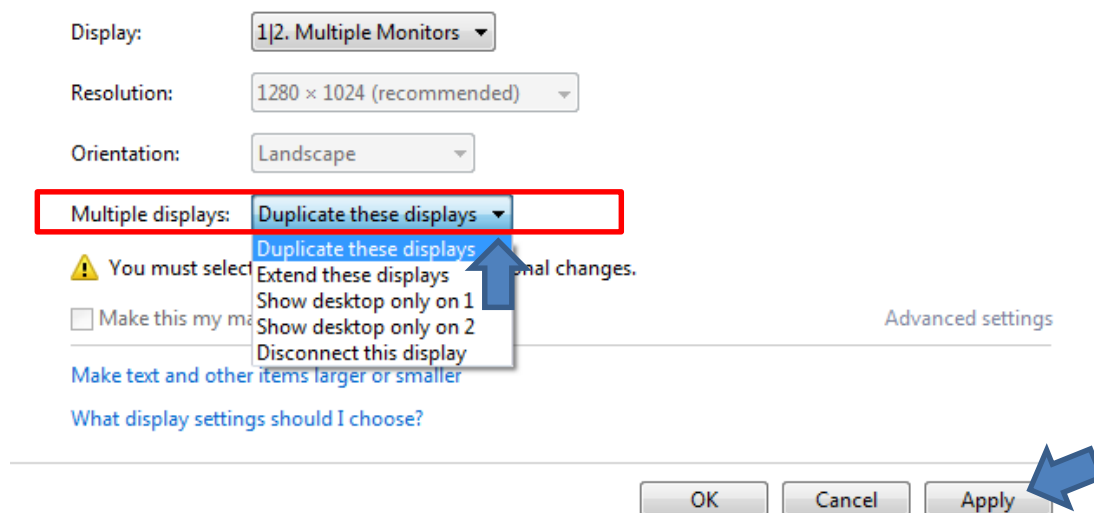
## Troubleshooting Display Connection

When you connect a laptop to the projector, the computer may be in extended mode. Extended mode is when the computer uses the projector as an extra monitor extending the visual range of the desktop. To correct this issue, Right click on the desktop. From the drop down menu, select **Screen resolution\***.

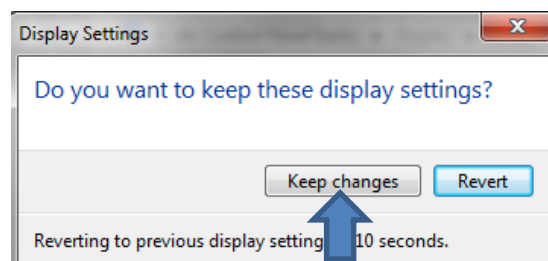


\*in Windows 10, select **display settings** instead of screen resolution

In **Screen resolution**, you will find different display options. Under the **Multiple displays** drop down menu, select **Duplicate these displays**. Then, click **Apply**.



A box will appear on screen asking if you want to keep these display settings. Click **Keep changes**. The computer is now in duplicate mode. The projected image will now mirror your computer.



When connecting your mac click on **the Apple icon** (🍏). From the drop down menu, select **System preferences**. From the **System preferences** menu, click **Displays**.



In display options, select the **Arrangement** tab. Check the **Mirror Displays** box. The projected image will now mirror your computer.

