



CLASSROOM TECHNOLOGY GUIDE

LAW 244

RWU Classroom and Event Support
401-254-6363 option 2
mediatech@rwu.edu

Roger Williams
University

Information
Technology

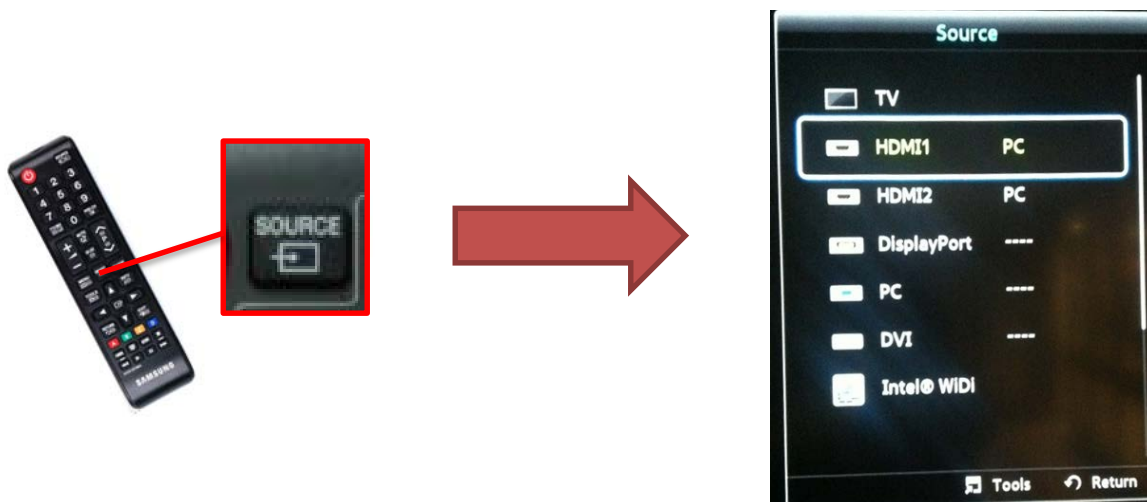
In the Samsung display rooms you will find a **Samsung display and remote**, a **Lenovo computer located behind the TV**, a **wireless mouse and keyboard** to use with the Lenovo PC and a **HDMI connection**.

To power on the display, press the **Red Power button** on the remote. The display will show the last source that was selected.



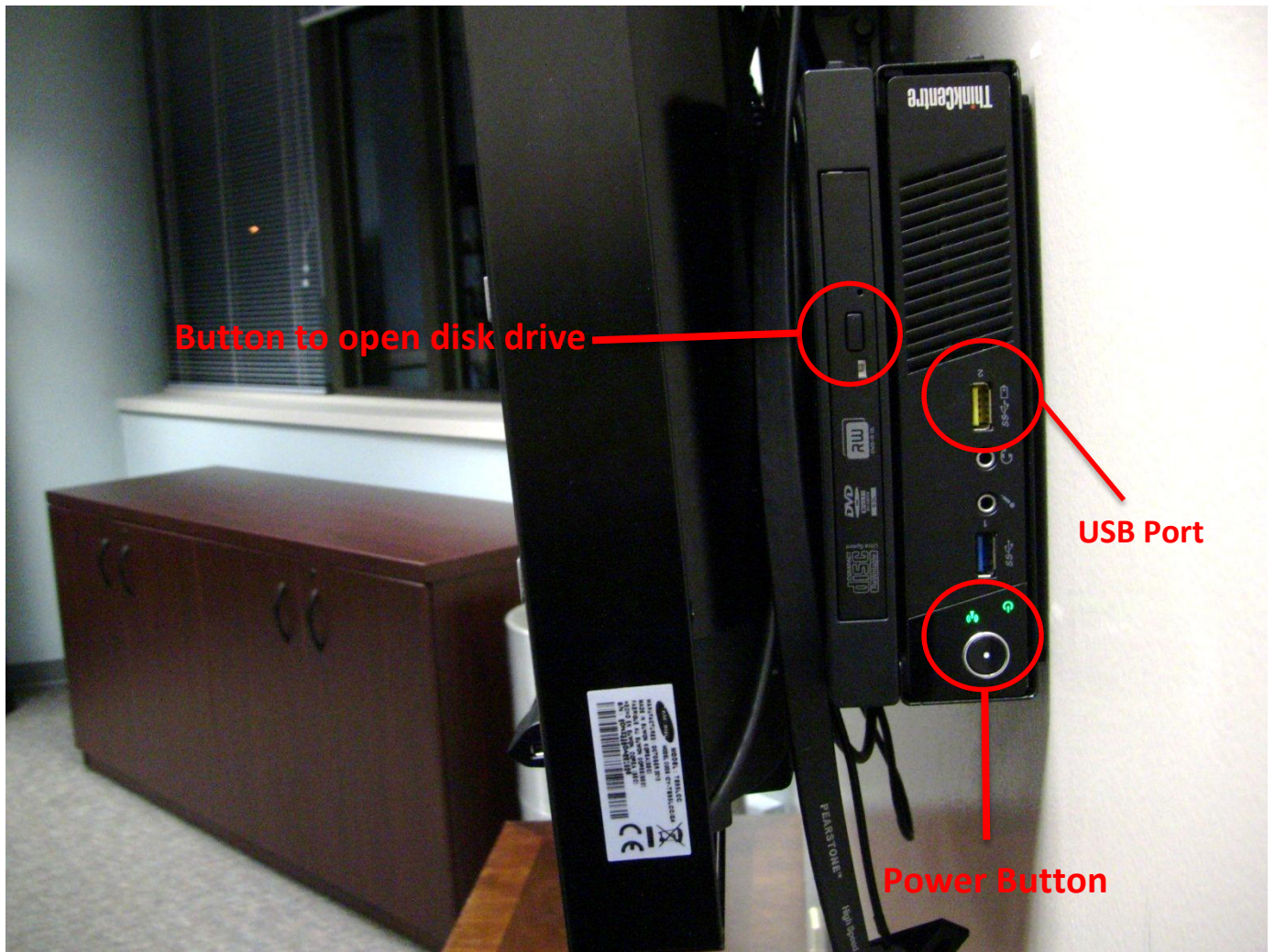
Using Lenovo PC

To display the Lenovo PC, press the **source** button on the remote. The source menu will show on the display screen.



Then, use the ▲▼ arrows on the remote to select **HDMI 1** and hit enter.





If the PC is not powered on, press the **power button** located on the front of the PC. The power button will light up **green** when turned on.

If you wish to play a DVD, there is a disk drive located on the Lenovo PC. To open, press the **Black button** on the disk drive. Insert disk and close. The DVD will load onto the computer automatically.


Connecting a Laptop

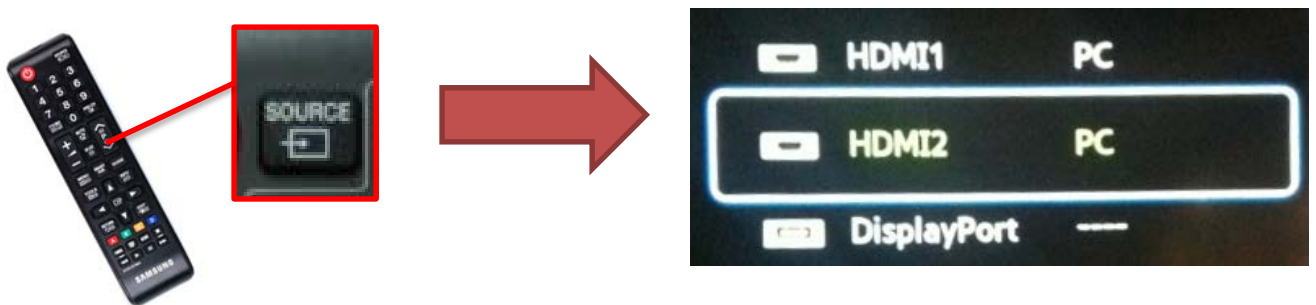
To connect a laptop to the system, use the **HDMI cord** connected to the Samsung display. The cord is located behind the display. Plug the HDMI cord into your laptop.



Turn on TV with the **Red Power button**.

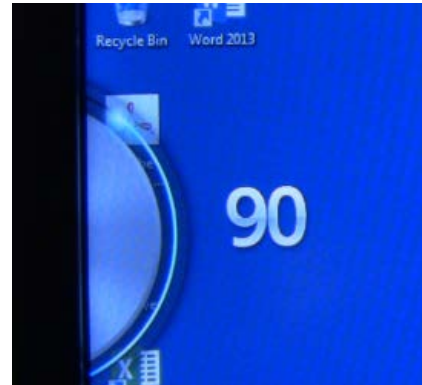


Press the source button on the remote. The source menu will show on the display screen. Use the ▲▼ arrows to select **HDMI 2**. Then, press enter. 

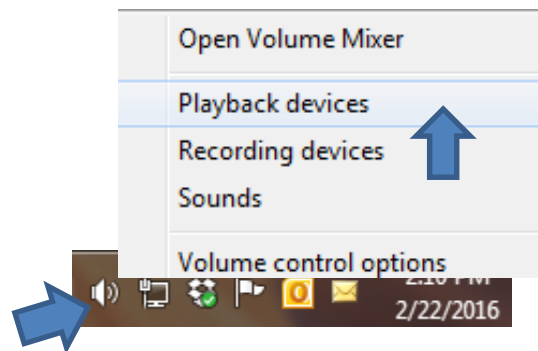


Adjusting Audio

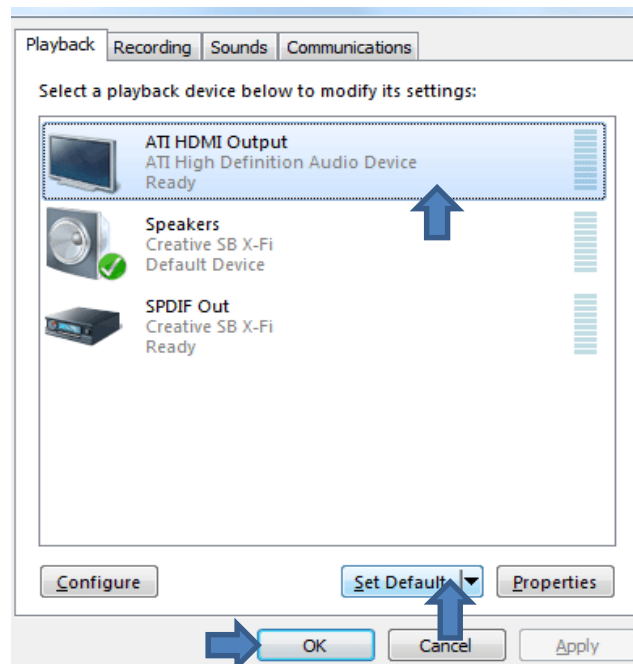
If you need to adjust the volume of the display, simply use the remote **Volume up and down buttons**. The volume level number will appear on the left side of the display.



When connecting a laptop, make sure the laptop audio is going to the display. Right click on the **volume icon** located on the lower right corner of the screen. Click **playback devices**.

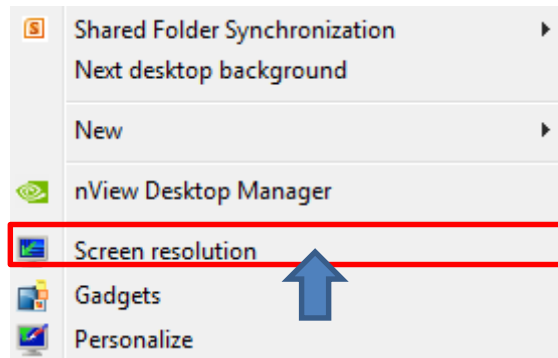


Select **HDMI output**. Click **Set Default**. Click **OK**.

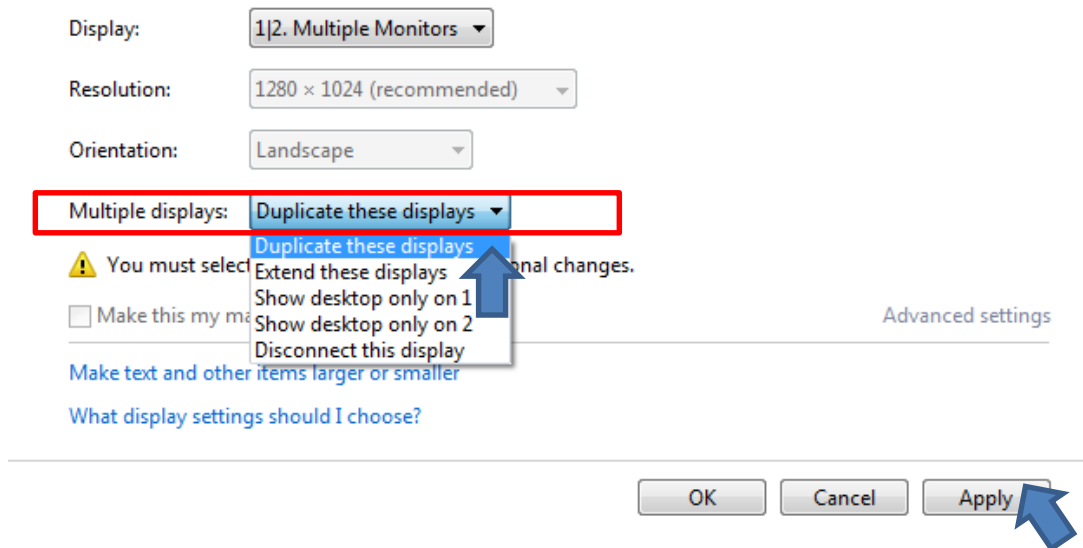


Troubleshooting Display connections

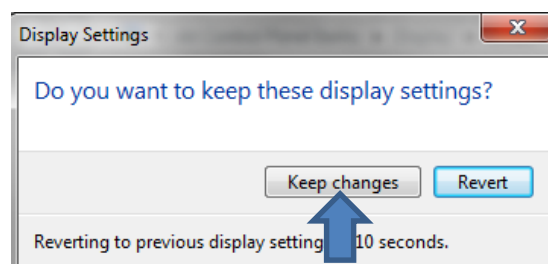
When you connect a laptop to the display, the computer may be in extended mode. Extended mode is when the computer uses the display as an extra monitor extending the visual range of the desktop. To correct this issue, Right click on the desktop. From the drop down menu, select **Screen resolution**.



In **Screen resolution** you will find different display options. Under the **Multiple displays** drop down menu, select **Duplicate these displays**. Then, click **Apply**.



A box will appear on screen asking if you want to keep these display settings. Click **Keep changes**. The computer is now in duplicate mode. The projected image will now mirror your computer.



When connecting your mac, click on **the apple icon (🍏)**. From the drop down menu, select **System preferences**. From the **System preferences** menu, click **Displays**.



Once in display options, select the **Arrangement** tab. Check the **Mirror Displays** box. The projected image will now mirror your computer.

