



*From the Office of  
the Provost  
October 2017  
Volume 7, Issue 1*

# Academic Affairs Happenings

Dear Faculty,

I'm pleased to present the fall edition of the Academic Affairs Happenings newsletter. Inside you will find an expanded listing of your colleague's accomplishments in teaching, research, and service. This work makes possible the vibrant educational experience for our students and the University's growing contributions to the community.

Best,

Andy Workman  
Provost and Senior Vice President for Academic Affairs

# Research, Grants, Publications and Presentations

**Edgar Adams** served as a Moderator/Organizer at the 2017 GrowSmart RI Transit Forum, and presented "Finding Common Ground: Smart Growth and Affordable Housing in Rhode Island" at the Northeast ARC User Group Conference in November.

**Garrett Berman** and undergraduate student Amanda Hefner; currently earning her MA in Psychology at the New School and graduate students Danielle Rumschik and Kristina Todorovic co-authored four studies presented at domestic and international Psychology meetings.

Toglia, M., Rumschik, D., Todorovic, K. **Berman, G. L.** Glober, C. (2017, November). Breaking the code: Analysis of mistaken identification cases in the Innocent Project. Poster accepted for presentation at the meeting of the Psychonomic Society, Vancouver, CA.

Hefner, A. & **Berman, G. L.** (2017, May). Who's dangerous? An examination of Psychotic behavior and differential psychiatric conditions on perceptions of mentally ill person. Poster presented at the meeting of the Association for Psychological Science, Boston, MA.

Toglia, M., **Berman, G. L.**, Glober, C., Todorovic, K., & Beeler, D. (2017, April). An archival analysis of the Innocence Project. Poster presented at the annual meeting of the Showcase of Osprey Advancements in Research & Scholarship (SOARS), University of North Florida, Jacksonville, FL.

Hefner, A. & **Berman, G. L.** (2017, March). The effects of psychiatric condition and childhood upbringing on perceptions of mentally ill persons. Poster presented at the meeting of the International Convention of Psychological Science, Vienna, Austria.

**Karen Bilotti** and **Margaret Case** co-authored "Scaffolded Student Collaboration: Writing Fellow Integration for Enriched Critical Analysis," forthcoming essay in *Double Helix, A Journal of Critical Thinking and Writing*. This essay shares critical thinking pedagogy resulting from embedding Writing Center Writing Fellows for three consecutive years in ENG 220 (Literary Analysis).

**Julian Bonder** presented at six conferences since Spring 2017 in the US, Mexico, and Argentina, including: "43 estudiantes" & "Memoria y Espacio" at the Museo de la Memoria y Tolerancia, in Mexico City, "Proyectos y Obras" at the Universidad Argentina de la Empresa in Buenos Aires, Argentina, "Cronicas Urbanas - Canal A+ / - 30-minutes TV program (public television), dedicated to Bonder's work and ideas on Argentina Public television, "Memory|Works" at the John Nicholas Brown Center for Public Humanities at Brown University, "Symbolic Reparations" Cultural and Humanitarian Agents Conference at Harvard University's Mahindra Center, and "Universities and Slavery: Bound by History" at Harvard's Radcliffe Institute Conference.

**Bonder's** completed an essay "Memory-Works, On Memory, Trauma, Public Art and Public Space", in the book *A Companion to Public Art*, Cher Knight & Harriet Senie, Editors – Wiley/Blackwell Publishers. He

has also recently serviced as an Advisory Board Member to the Symbolic Reparations Research Project, and as a Jury Member on the Association of Collegiate Schools of Architecture Steel Building Award and Creative Achievement Award. Bonder is also at work (with Andrew Cohen/ACTWO Architects) on the Clark University Colin-Flug Graduate Study Center, Worcester, MA

**Adam Braver**, SAR Northeast representative, and the University Library hosted the first Northeast SAR regional conference in June for members and interested parties throughout the Northeast. Over 20 members were in attendance, including members from Brown, Harvard, Sienna and Fairfield universities.

**Loren Byrne** presented two oral presentations at the Soil Ecology Society meeting in Fort Collins, CO in June “Integrating soil biodiversity & soil ecology into non-soil-focused undergraduate courses” and “Soil health fosters student engagement & deepens environmental literacy in soil ecology education”.

**Byrne** also co-organized and moderated a special “Ignite” oral presentation session at the Ecological Society of America’s annual meeting in Portland, OR in August, entitled, “Try this to help students learn ecology better.” At this meeting, he also presented a talk entitled, “Learner-Centered Teaching Techniques for Ecological Education that Enhance Student Engagement & Skill Development.”

**Sara Butler** offered the lecture “Amazing Groves: Landscape and Memory at Bristol’s North & South Farms,” at the Bristol Garden Club in October 2017, and at RWU in April 2017.

**Jeremy Campbell’s** book, *Conjuring Property: Speculation and Environmental Futures in the Brazilian Amazon*, received the James M. Blaut Award from the

American Association of Geographers, in recognition of innovative scholarship on cultural and political ecology in April 2017. The book was chosen from nearly seventy entries. The first of its kind, *Conjuring Property* is a detailed study of the land fraud and speculative tactics that are quickly transforming the world’s largest remaining tropical forest biome. Based on over a decade of ethnographic and archival research, the book offers rarely-seen insights into the politics and culture of colonialism and the devastating logics of “frontier-thinking.” As recipient of the Blaut prize, Campbell will be invited to give a plenary lecture at the next congress of the American Association of Geographers, in New Orleans (April 2018). *Conjuring Property* was also awarded the Honorable Mention in the 2016 Book Prize Competition of the Association for Political and Legal Anthropology. The book, Campbell’s first, was published in 2015 by the University of Washington Press, and was made possible by support from the RWU Foundation for the Promotion of Scholarship and Teaching.



**Campbell** also received a research grant in the amount of \$9,300 from the Americas Research Network, in honor of the late Betty J. Meggers (a prominent Amazonian archaeologist). The funds supported Campbell’s sabbatical research on the impacts of hydroelectric dams on native peoples in the Tapajós Valley (Brazil), and on the resourceful forms of “neighborliness” to which indigenous and other traditional communities turn when faced with exogenous threats. Campbell spent eight weeks in Brazil throughout the Spring of

2017, while on sabbatical from RWU. He also attended a conference in Lima, Peru, at which he presented some of his initial research findings.

In June, **Campbell** was one of three international scholars invited to keynote a workshop sponsored by the University of Copenhagen's Department of Food and Resource Economics. The workshop, "Rule and Rupture," convened Danish students, post-docs, and professors funded by the European Research Council to "investigate how political authority is constituted and contested in moments of rupture, with a special focus on the global south." During the two-week gathering in Skagen, Denmark, Campbell presented his ongoing research on land conflicts in the Brazilian Amazon, and provided advice and mentoring to junior scholars on developing their research.

**Ben Carr** and **Susan Bosco** presented at the Academy of Management Annual Meeting Professional Development Workshop titled "Choreographing The Teacher/Student Interface Into A Prize Winning Tango: (TLC) Model Insights".

**Charlotte Carrington-Farmer** travelled to the University of Adelaide in Australia in July 2017 to present her research on horses in the eighteenth-century Atlantic world at the Australasian Animal Studies Conference. She recorded a podcast entitled "Horses, Slavery, and History," *Knowing Animals Series*, Episode 51, (forthcoming, 23<sup>rd</sup> October 2017), <http://knowinganimals.libsyn.com>. Her research will be published in a chapter later this year, entitled 'Trading Horses in the Eighteenth Century: Rhode Island and the Atlantic World' in Kristen Guest and Monica Mattfeld, eds., *Equine Cultures: Horses, Human Society, and the Discourse of Modernity, 1700-Present* (Chicago: University of Chicago Press, 2017.)

**Margaret Case** and majors from RWU's American Studies and Communications presented refereed papers at the April National Popular Culture Association Conference (PCA) in San Diego, thanks in large part to RWU's Provost Grant Funds. Presenting were (ENG & CW majors: Kaitlin Garcia, Courtney Dell'Agnese, Caroline Conroy, and Nicole Andreson. Their paper titles are available on the RWU Dept. webpage: <https://www.rwu.edu/academics/schools-and-colleges/fshae/departments/english-creative-writing/english-literature/major-news/student-presentations>.

**Case** presented on ideological tension in *Pride & Prejudice & Zombies* at the National Popular Culture Association Conference (PCA) in San Diego, which she attended this past April with four of her ENG/CW students (see above "In Our Classrooms.")

**Case** presented a paper on Jane Austen's unfinished novel, *Sanditon*, at Trinity College, Cambridge UK 29-3 March 2017. <https://sanditon200years.wordpress.com/> This presentation has since been revised for print and accepted for forthcoming publication in the on-line Austen Journal *Persuasions: Catching Austen in the Act of Greatness: Re-reading Sanditon with Caution*.

**Case** will be presenting a paper on two film adaptations of Jane Austen's novels (*Pride and Prejudice* and *Lady Susan*) at the Jane Austen Society of North America in Huntington, CA on October 6, 2017.

**Sonya Cates** coauthored with recent RWU COMSC grads Daniel Barron and Patrick Ruddiman. "MobiLearn Go: Mobile Microlearning as an Active, Location-aware Game" in Proceedings of the 19th International Conference on Human-Computer Interaction with Mobile Devices and Services.



**Patrick Charles** presented three papers in Istanbul at the International Conference on Building Envelope Systems and Technologies (ICBEST) in May 2017, which were also included in conference proceedings: "Building Envelopes with Natural Ventilation Integrated in the Structure: Two Cases", "Building Envelope Retrofits Four Teaching Experiences" (with J. Ruoff), and "An International Trade Fair as Add-on to Building Envelope Systems Teaching".

**Sean Colin** received a \$250,332 NSF Biological Oceanography grant, and will serve as PI: "What's their impact? Quantification of medusan feeding mechanics as a tool for predicting medusan predation"

**Colin, S. P.**, Bezio, N., Perry, E., Costello, J.H.,. Effects of capture surface morphology of scyphomedusae on feeding success: a comparative study. Mar. Ecol. Prog. Ser. Submitted.

**Colin, S. P.**, Corrales, M.V, Sutherland, K.R. 2017. Nematocyst distribution corresponds to prey capture location in hydromedusae with different predation modes. Mar. Ecol. Prog. Ser. 568, 101-110.

Cornelia J., Costello, J. H., Sutherland, K. R., Gemmell, B., Lucas, K. N , Tackett, J., Dodge, K., Colin, S. P. 2017. Resilience in moving water: Effects of turbulence on the predatory impact of the lobate ctenophore *Mnemiopsis leidyi*. Limnol. Oceanogr. doi:10.1002/lno.10642.

Gemmell, B.J., Colin, S. P., Costello, J. H. 2017. Widespread utilization of passive energy recapture in swimming medusae. J. Exp. Biol. In review.

Gemmell, B.J., Fogerson, S.M., Costello, J.H., Morgan, J.R., Dabiri, J.O. and Colin, S. P. 2016. How the bending kinematics of swimming lampreys build negative pressure fields for suction thrust. J. Exp. Biol. 219: 3884-3895.

Nagata, R. M., Costello, J.H. , **Colin, S.P.**, Migotto, A.E., Morandini, A.C. 2016. Transitions in morphology and fluid environment lead to the development of feeding mechanism in a Rhizostomeae medusa. Mar. Ecol. Prog. Ser. Vol. 557: 145-159.

Sutherland, K.R., Gemmell, B. J., **Colin, S.P.**, Costello, J.H. 2016. Prey capture by the cosmopolitan hydromedusa, *Obelia* spp., in the viscous regime. Limnol. Oceanogr. 61: 2309-2317.

**Colin** received a \$114,393 NSF Fluid Dynamics grant, and will serve as PI: "Fluid mechanical basis of universal natural propulsor bending patterns"

**Colin** \$204,754 NSF IDBR grant, and will serve as PI: "Collaborative Research: IDBR: Type A: Diver-operated imaging platform with complementary systems for quantifying aquatic organism interactions".

**Julie Coon**, and students Nicholas Dillon, Natasha Perez, and Edward Cunanan gave a poster presentation titled "Voices from Woonsocket, RI: Residents' Perceptions of Community Issues, Crime, and the Woonsocket Police Department," at the RWU Community Engagement Celebration at the Waterfire Arts Center, Providence, RI, in April 2017.

**Robert Dermody** gave several recent conference presentations, including: "Deer Isle Bridge: How a work of engineering infrastructure changed the life and landscape of a Maine Island", Architecture, Culture and Spirituality Symposium (ACS) 9 Practice, Craft, Materials, and Making at Haystack, Deer Isle, ME, "The Bridge Designs of David Steinman", American Society of Civil Engineers Structures Congress, "*Conde. B. McCullough, Oregon's Bridge Builder*" Construction History Society of America (CHS) meeting, Seattle, "The Future of Structures Education: A Candid Conversation",

Building Technology Educators' Society Conference Workshop, and "Communication Matters", National Conference on the Beginning Design Student 33.

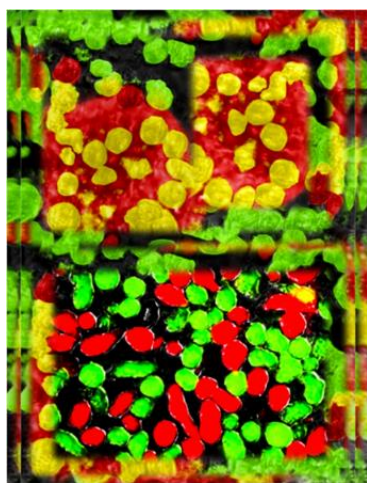
**Edward Dougherty** published *Using matrix population models to inform biological control management of the wheat stem sawfly, *Cephus cinctus**", Biological Control, Volume 109, 2017.

**Dougherty** was awarded a research grant of \$56,462 from NIH-INBRE to support 2 summers of research with undergraduate students.

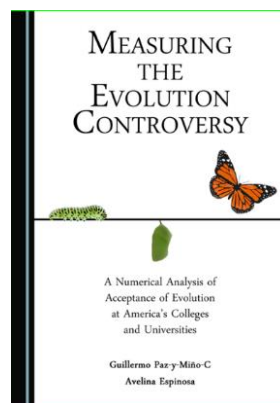
**Dougherty** presented his research with students at several conferences including (i) Biology and Medicine through Mathematics National Conference at VCU and (ii) North East Regional IDEa Conference at UVM.

**Avelina Espinosa**: \$50,000 National Institute of Health General Medicine grant 2 P20 GM103430 "Anaerobic Enzymes as Drug Targets in the Treatment of Amebiasis" (2016 - 2018)

**Avelina Espinosa** 1500 Rhode Island NSF-EPSCoR EPS-1004057: *Entamoeba* spp. as models to explore the effects of environmental stress due to climate change in marine protists (2017).



Paz-y-Miño-C, G & **Espinosa, A.** 2016. Measuring the Evolution Controversy: A Numerical Analysis of Acceptance of Evolution at America's Colleges and Universities. Cambridge Scholars Publishing, Newcastle, United Kingdom. ISBN (10): 1-4438-9042-1, ISBN (13): 978-1-4438-9042-7.



**Espinosa, A.**, Paz-y-Miño-C, G., Hackey, M\*. Rutherford, S. 2016. *Entamoeba* Clone-recognition Experiments: Morphometrics, Aggregative Behavior, and Cell-signaling Characterization. J. Eukaryot. Microbiol. Vol. 63 (3): 367-377 DOI: 10.1111/jeu.12313

Paz-y-Miño-C, G., **Espinosa, A.** 2016. Kin Discrimination in Protists: From Many Cells to Single Cells and Backwards. J. Eukaryot. Microbiol. Vol. 63 (3): 384-393 DOI: 10.1111/jeu.12306

**Espinosa, A.**, Paz-y-Miño-C, G., Gabriel, M. Lowerre, K. Rossi, L. 2016. ADHE enzymes in *Entamoeba*: Origins, Molecules and Biochemistry, International Society of Protistologists meeting, Prague, Czech Republic July 30-Aug 6

**Espinosa, A.** exhibited a Collage of *Entamoeba invadens* fluorescent cells during the International Society of Protistologists meeting, Prague, Czech Republic July 30-Aug 6

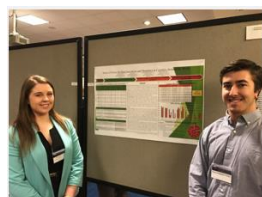
**Nathan Fash** achieved presentations and publications including “Widening the Field: Technology in the Developing World”, Poetics and Pragmatism. Proceedings of the Building Technology Educators Society Conference, Des Moines in June 2017, and at the AIAri Summer Expo: Composites in Architecture, June 20.

**Gail Fenske** completed a book chapter “Medievalism, Mysticism, and Modernity in Early 20<sup>th</sup>-Century New York: Cass Gilbert’s ‘Skyscraper Gothic.’” In *Skyscraper Gothic*, edited by Kevin Murphy and Lisa Reilly, 55-87, Charlottesville, Virginia: University of Virginia Press. She was also a discussant in “Stanford Anderson and HTC,” MIT, School of Architecture and Planning, May 2017.

**Amine Ghanem** and **Gokhan Celik** attended the 8th Annual Conference of the European Decision Sciences Institute (EDSI 2017) in Granada Spain, and presented their research titled: “Status of Green Building Incentives and Mandates in Counties Around the World”



**Ghanem** and **Celik** took four CM students to Seattle to attend the ASC Annual International Conference (April 2017) and present their research projects.



Elizabeth Anthes and Kyle Peahl, presenting their research at a peer-reviewed conference in Seattle, WA (April 2017)



Jonathan Hentze and Richard Sleight, presenting their research at a peer-reviewed conference in Seattle, WA (April 2017)

**Ghanem** presented his research at the ASC Annual International Conference (April 2017) in Seattle WA titled “An Evaluation of Engineer’s Estimates for Transportation Projects: A Michigan Case Study”.

**Gary Graham** was a presenter to “Student Architectural Ethnographic Photo-Elicitation: Listening to Places Through Inhabitant Voices” at the Environmental Design Research Association Conference 48, Voice of Place: Empower, Engage, Energize, in Madison Wisconsin in May. He also presented “Taravista: Building A Patient-Centered Therapeutic Hospital,” at The Patient Experience Symposium, Boston. His firm GMI Bristol completed State of Massachusetts, Safety Improvements Projects at various Facilities, MA providing safer inpatient facilities.

**Ernest Greco** did a book review: Church of Spies: The Pope's Secret War Against Hitler (Mark Riebling, Basic Books, 2015) in The Catholic Social Science Review, Vol 21, 2016

**Lindsey Gumb** presented “OER, Copyright, and Faculty: Are Librarians Qualified to Support this Triptych?” at the ACRL-NEC Annual Conference held in Burlington, VT. An adaptation of her presentation has been accepted to be presented at the national OpenEd conference in Anaheim, CA in October.

**Guralnick LJ**, K Gladsky (2017) Crassulacean acid metabolism as a continuous trait: Variability in the Contribution of Crassulacean acid metabolism (CAM) in Populations of *Portulacaria afra*. Heliyon 3 (2017) e00293. <http://dx.doi.org/10.1016/j.heliyon.2017.e00293> 2405-8440.

**Saeed Hydaralli** presented a paper at the Canadian Sociological Association (CSA) meeting in Toronto (May 27 – June 2, 2017). A case study of a conflict over bike lanes in the city of Toronto to raise the

question of the image of the city, in relation to the facilitation of health and well-being.

**Hydaralli** also presented a paper at the American Sociological Association (ASA) meeting in Montreal (August 12-15, 2017). A controversial case study of public health policy from December 2015 in which the Province of Ontario attempted to solve the inability of those women (up to the age of 42) who are unable to conceive in the conventional manner by providing them with public (i.e., Provincial government) funding for one round of In-Vitro Fertilization (IVF).

**Robert Jacobson** presented at MathFest, Chicago, IL (July, 2017). "Teaching Complex Analysis With A Spherical Camera"

**Jacobson** completed a piece of mathematical software called MathLine that improves the Sage computer algebra system.

**Jacobson** presented at the Joint Meeting of Ichthyologists and Herpetologists, Austin, TX. "Stop Counting Eggs! Using Computer Vision To Gather Data"

**Jacobson** published *Weighted Bergman Kernel Functions Associated to Meromorphic Functions*. *Rocky Mountain Journal of Mathematics* 47, no. 1 (February 2017): 239–57. doi:10.1216/RMJ-2017-47-1-239.

**Jeznach L.C.**, Hagemann, M., Park, M., Tobiason, J.E. (2017) "Proactive modeling of water quality impacts of extreme hydrologic events in a drinking water reservoir", Journal of Environmental Management. Vol 201, pp. 241-251, doi: 10.1016/j.jenvman.2017.06.047

Hagemann, M., **Jeznach L.C.**, Park, M., Tobiason, J.E. "Proactive modeling of water quality impacts of extreme hydrologic events. Part 1: Watershed loads", Submitted

to the Journal of Environmental Management. Accepted pending revision.

Granato, G.E., and **Jeznach, L.C.**, 2017, "Communicating risk with graphics". U.S. Geological Survey, 12 Video lessons. Available at: <https://doi.org/10.5066/F7BG2M33>

Mohan, A.; **Jeznach, L.C.**; Tobiason, J.E.; Reckhow, D.A. (2018) "A sensitive solid phase micro-extraction technique for modelling impacts of hypothetical oil spills in fresh water sources" *AWWA Annual Conference and Exposition*, Las Vegas, Nevada, June 2018. Submitted for acceptance as oral presentation.

**Jeznach, L.C.**, Granato, G. (2017) "Educational outreach for the new Stochastic Empirical Loading and Dilution Model (SELDL) for highway and urban storm water analyses" *Association for Environmental Engineering and Science Professors (AEESP) Research and Education Conference*, University of Michigan, Ann Arbor, MI, June 2017. Oral presentation.

**Jeznach L.C.**, Mohan, A., Reckhow, D.A., Tobiason, J.E. (2017) "Modeling hydrocarbon fate and transport in a drinking water reservoir", *AWWA Annual Conference and Exposition*, Philadelphia, Pennsylvania, June 2017. Poster.

**Hasala Senpathy Gallolu Kankanamalage** he 13th IEEE International Conference on Control and Automation, Macedonia (2017. "On notions of Input-to-Output stability for Nonlinear Systems with Time Delays".

**Gallolu Kankanamalage** presented at the 20th World Congress on the International Federation of Automatic Control, France (2017). "On Lyapunov-Krasovskii Characterizations of Input-to-Output Stability."



**Hasan-Uddin Khan** is completing a monograph, *Architecture in Pakistan since 1947*, to be published by Oxford University Press. He also has completed the following chapters “Because We Can: Globalization and Technology Enabling Iconic Architecture Excesses” *International Journal of Islamic Architecture (IJI)*, Vol. 7, No. 1, November 2017, and “Architectural Agendas in Pakistan” in *55 Architects of Pakistan*, Arch Press, Karachi.

**Tadeusz Kugler** “Demography and International Relations: Politics, Economics, Sociology and Public Health.” In *Interdisciplinary Approaches to International Studies*, edited by Patrick James and Steve Yetiv. pp. 229-261. London, UK: Palgrave Macmillan.

Kang, Kyungkook., and **Tadeusz Kugler**. “International Political Economy and Political Demography: An Interdisciplinary Exploration.” In *Interdisciplinary Approaches to International Studies*, edited by Patrick James and Steve Yetiv. pp. 263-287. London, UK: Palgrave Macmillan.

**Kugler, Tadeusz** “The Dream of European Nationalists - The Effects of Zero Migration on European Political Hierarchy”. Midwest Political Science Association, Chicago, IL.

**Kugler, Tadeusz.** “The Systemic Study of Recovery After War. With Ali Fisunoglu and Kyungkook Kang. International Studies Association. Baltimore, Maryland.

**Nermin Kura** had her work featured in a group show titled “Angel's Share” (Group Show) September 14<sup>th</sup> October 22<sup>nd</sup> 2017 At DEPO – Istanbul (a prominent cultural center for art and critical debate). The exhibition was curated by Deniz Artun, (Director of Nev Galeri in Ankara). It is a neighboring event to the Istanbul Biennale, and brings together works from nineteen Turkish artists. The exhibition features six of her ceramic works, one of which was featured on the front page of the exhibitions

section of “Istanbul Art News” (an influential art newspaper).



**Kura** 's work is also exhibited in a group show titled “Rendez-Vous” (Group Show) featuring works of artists represented by four contemporary art galleries in Istanbul September 22<sup>nd</sup> October 20<sup>th</sup> 2017. The show takes place during the Istanbul Biennale at the Emir Hotel's Lobby area. Galeri Apel which represents her work is showing five of her digital prints.



**Kura** had her silicone sculptural works featured in the book. "Roosevelt Artists Collaborative" September 9<sup>th</sup> 2017. An art book project conceived by 25 artists from Roosevelt, NJ, who have created pages in, and on a variety of materials and machines.



**Leguizamo, A.** (2016, November). *The Elephant in the Room: Multicultural Issues in Sex Offender Treatment*. Keynote address delivered at the 35<sup>th</sup> annual research and treatment conference of the Association for the Treatment of Sexual Abusers, Orlando, FL.

**Leguizamo, A.** (2017, July). *Toward Increased Multicultural Competence in Sex Offender Assessment and Treatment*. Keynote address delivered at the 11<sup>th</sup> annual conference of the Sex Offender Management Board for the state of Colorado. Breckenridge, CO.  
**Leguizamo, A.** (in press). The Object Relations and Victimization Histories of Youth Committed for Sexual Offenses. In B. Schwartz (Ed.) *Sexually Abusive Behavior in Youth: A Handbook of Theory, Assessment, and Treatment*. Kingston, N.J.: Civic Research Institute, Inc. (Updated chapter).



**Leguizamo, A.** & Campbell, J. (in press). Consciousness Raising for 21st Century Faculty: Using Lessons from Diversity Flashpoints. In D. Liston & R. Rahimi (Eds.). *Forwarding a Social Justice Agenda Through the Scholarship of Teaching and Learning*. Bloomington, IN: Indiana University Press.

Jeglic, E.L., Fraga Dominguez, S., Calkins, C., **Leguizamo, A.** (2017). Are Latino Sex Offenders Different? A Closer Examination of the Characteristics and Offense Patterns of Latino Sex Offenders. *Sexual Abuse: A Journal of Research and Treatment*. Advance online publication. doi: 10.1177/1079063217710480

Schaaf, S., Jeglic, E. L., Calkins, C., Raymaekers, L., & **Leguizamo, A.** (2016). Examining Race and Ethnicity Related Differences in Child Molester Typology: An MTC:CM3 Approach. *Journal of Interpersonal Violence*. Advance online publication. doi: 10.1177/0886260516653550

**Leguizamo, A.** (2017, July). *Applying Multicultural Competence Concepts to Sex Offender Assessment and Treatment: From Therapists' Responsibilities to Case Conceptualization*. Workshop presented at the 11<sup>th</sup> annual conference of the Sex Offender Management Board for the state of Colorado. Breckenridge, CO.

**Dahlani Reynolds** co-authored a forthcoming National Collegiate Honors Council monograph with **Margaret Case** and **Becky Spritz**. "Linking Honors Courses: A New Approach to Defining Honors Pedagogy." *Breaking Barriers in Teaching and Learning*, edited by James Ford and John Zubizarreta, based on assessment of two years of a pedagogical pilot on the issue of transitional learning in Honors. This study linked three separate RWU Honors courses: WTNG 110, CORE 104, and HON 100.

Patel, D., Hart, J., Ternullo, D., Constantive, O., Jackson, B., Knight, K., Masuk, A., Parratt, E., **Tooley, E.M.**, & **Leguizamo, A.** (2017, May). *Generational and Gender Differences in Mindfulness, Resilience, and Spirituality*. Poster presented at the 29th annual convention of the Association for Psychological Science. Boston, MA.

Uber, J., Behrends, E., Dinnean, M., Ferreri, N., & **Leguizamo, A.** (2017, May). *Barriers in the Reporting of Campus Sexual Assaults: An Exploration of Gender Differences*. Poster presented at the 29th annual convention of the Association for Psychological Science. Boston, MA.

**Leguizamo, A.** & Beliveau, P. (2017, April). *Framework for Gaining Multicultural Competence as a Sex Offender Treatment Provider*. Paper presented at the 18th annual joint conference of the Massachusetts Adolescent Sexual Offender Coalition and the Massachusetts Association for the Treatment of Sexual Abusers. Marlborough, MA.

Beliveau, P. & **Leguizamo, A.** (2017, April). *Ethnic Differences in Sentencing for Sexual Offenses: Preliminary Findings*. Poster presented at the 18th annual joint conference of the Massachusetts Adolescent Sexual Offender Coalition and the Massachusetts Association for the Treatment of Sexual Abusers. Marlborough, MA.

**Nicole Martino** presented the paper titled, "Reinforced Concrete Bridge Deck Condition Assessment Methods Using Ground Penetrating Radar and Infrared Thermography," at the 19th International Conference on Structural Engineering, held in London, England. This presentation was awarded the "Best Presentation Award".

**Martino** co-authored (along with **William Palm** and **Benjamin McPheron**) the paper titled, "STILAS: STEM Intercultural Leadership Ambassador Scholars in Biology, Marine Biology, and Engineering", presented at the 124th American Society for Engineering Education Annual Conference and Exposition, held in Columbus, Ohio.

**Geraldo Matos** presented the preliminary findings of a faculty-student research project done in concert with Lindsey Lopez, a marketing major in the Gabelli School of Business, at the Marketing Management Association Fall Educators' Conference. This work explores the extent to which Eurocentric Beauty Standards are present in marketing to women of color, and how this impacts young minority women. He also was a panel member for the topic of Transitioning from Practice to Academia at the same conference.

**B.D. McPheron**, M.Z. McPheron, C.R. Thomas. "Does Performance-Based Assessment in an Introductory Circuits Laboratory Improve Student Learning?" *Proceedings of the 2017 American Society for Engineering Education Annual Conference & Exposition*, June 25-28, 2017.

**Williams Palm, N. Martino, B.D. McPheron**. "STILAS: STEM Intercultural Leadership Ambassador Scholars in Biology, Marine Biology, and Engineering." *Proceedings of the 2017 American Society for Engineering Education Annual Conference & Exposition*, June 25-28, 2017. E.T. Daniels, **B.D. McPheron**. "A Machine Learning Approach to Classifying Algae Concentrations." *2017 IEEE MIT Undergraduate Research Technology Conference*, November 3-5, 2017.

**Olga Mesa** presented the following papers "Non-Leaner Matters: Auxetic Surfaces", in Disciplines & Disruptions ACADIA 2017 Conference, MIT in November 2017, and the Fabricate 2017 Conference in Stuttgart, "Auxetic Surfaces" work from Harvard Material Processes and Systems Lab.

**Cliff Murphy** received \$89,503 grant through RI-STAC "Developing Detection Methodologies for Combatting Cyanide Fishing", Pls: **Clifford B. Murphy, Cliff J. Timpson, Stephen K. O'Shea**, Andrew Rhyne, Alfred K. Hanson.

Provisional patent application: "Method and Device for Detecting Thiocyanate Ions in Marine Environments", **Clifford B. Murphy, Clifford J. Timpson**, #64/411,031, filed October 21, 2016

Presentation: "Creating a chemosensor device for the detection of thiocyanate ions in seawater – a forensic strategy to combat cyanide fishing." Amgen Seminar Series, Department of Chemical Engineering, URI – March 9, 2017.

Student presentation: "TransOceanic Thiocyanate Fishing Indicator device (TOTFI): a forensic chemosensor to aid in



combatting the cyanide fishing method.”  
Charles Flynn, Chynna Lopes, Cody Thuessen, Leah O’Neil, Luyi Chen, Connor Sweet, Amanda McCabe, Clifford B. Murphy, Matthew Stein; RI-EPSCoR “Bay Day” symposium, April 21, 2017.

Student presentation: “Developing a metalloporphyrin-based photo and electrochemical detector of thiocyanate ions in marine environments” Connor Sweet, Charles Flynn, Amanda McCabe, Clifford Murphy; (1) 41<sup>st</sup> Northeast Regional Meeting of the American Chemical Society, Binghamton, NY, October 2016, (2) 253<sup>rd</sup> National Meeting of the American Chemical Society, San Francisco, CA, April 2017.

Student presentation: “Development of a hand-portable chemosensor device to aid in combatting the trade of illegally caught fish through the cyanide fishing method.”  
Charles Flynn, Connor Sweet, Clifford Murphy; 41<sup>st</sup> Northeast Regional Meeting of the American Chemical Society, Binghamton, NY, October 2016.

**Roberto Viola Ochoa** presented at the Catedra Jorge Montes, UNIS, Guatemala: “Globalizacion: Oportunidad o Perdicion”, Modulo Programa de Maestria, UNIS Guatemala: Integracion de Sistemas en el Proceso de Diseno.

**Stephen O’Shea** is serving as co-PI on a RI STAC grant (\$89,500) he received for Developing Detection Methodologies for combating cyanide fishing.

**O’Shea** served as PI on a RI EPSCoR NASA grant (\$26,000) he received for Rapid Determination of halogenated hydrocarbons transformation in situ sediment cores.

**O’Shea** served as PI on a RI NASA Space Grant (\$5,000) Biomimetic CFCs Degradation and Insight to Biotic Halogen Cycling.

**O’Shea** and student Shayne Green presented their initial research results at the

10<sup>th</sup> Annual RI SURF Conference, July 2017 on Assessing legacy pollution by shell surface XRF analysis of sedentary shellfish.

**O’Shea** and students Natalie Gambrell and Colby Masee presented their initial research results at the 10<sup>th</sup> Annual RI SURF Conference, July 2017 on Sediment core depth profile enhanced degradation of CFCs y biotic and abiotic in-situ simulation.



Colby Masse, Holly Eberlin, Gambrell Natalie, Shayne Green

**O’Shea** and students Colby Masse and Natalie Gambrell presented their initial research results at the 10<sup>th</sup> Annual RI SURF Conference, July 2017 on Characterization of In-Situ Marine Core Sediment and Pore Water Degradation of CFCs.

**O’Shea** and student Holly Eberlin presented their initial research results at the 10<sup>th</sup> Annual RI SURF Conference, July 2017 on Development of in Field HPLC-Fluorescence Detection of Thiocyanide to Combat Illegal Cyanide Fishing.

Gratiano SM and **Palm WJ**. Can a five-minute, three question survey foretell first-year engineering student performance and retention? *Proceedings of the 123<sup>rd</sup> ASEE Annual Conference & Exposition*, New Orleans, LA, June 2016. Runner-up for best paper in the First-Year Programs Division. Stephanie Gratiano’s presentation at the 2016 ASEE Annual Conference & Exposition was awarded Best Student Presentation in the First-Year Programs Division. The \$125 cash award was announced and presented at the 2017 Annual Conference.



Conference paper: **Palm WJ, Martino NM, and McPheron BD.** STILAS: STEM Intercultural Leadership Ambassador Scholars in Biology, Marine Biology, and Engineering. *Proceedings of the 124<sup>th</sup> ASEE Annual Conference & Exposition*, Columbus, OH, June 2017.

**Eleftherios Pavlides** collaborated with RWU students and faculty in the conference presentation “Listening to Inhabitant Voices” co-organized with S. Mallori-Hill, **Gary Graham**, and RWU graduate students Sam Frohlinger, Sean McDermott, and Justin Zafra at the Environmental Design Research Association 48 Conference in Madison, Wisconsin; and presented “Bio-Elastegritty as Possible Explanation of Byssus Beard, Seminar at Zhao Qin Lab, MIT Mechanical Engineering in April.

Comstock, C., & **Platania, J.** (2017). The role of secondary traumatic stress on perceptions of safety. *American International Journal of Social Science*, 6, 1-10.

Rice, J., Beeler, D., Gelvin, B., Todorovic, K., & **Platania, J.** (2017). *Implicit stereotypes: The role of empathy*. Poster presented at the annual meeting of the Eastern Psychological Association, Boston, MA.

Aksterowicz, A., Beeler, D., Gelvin, B., Todorovic, K., & **Platania, J.** (2017). *Perceptions of hearsay evidence through the lens of reactance theory*. Poster presented at the annual meeting of the Eastern Psychological Association, Boston, MA.

**Platania, J.**, Rumschik, D., Gelvin, B., & Todorovic, K. (2017). *Counterargument and initial position in the context of positioning theory*. Poster presented at the annual meeting of the Association of Psychological Science, Boston, MA.

**Paola Prado** presented a paper, ““No one is running away”: A Critical Analysis of Public and Press Discourses of Sea Rise Impacts in South Florida” at the International Association for Media and Communication Research Annual Research Conference in Cartagena, Colombia, July 2017. This research, conducted in collaboration with R. E Gutsche, Jr. and J. Pinto of Florida International University, examines the social construction of news related to climate change. That same month, Prof. J. Pinto presented a second paper that ensued from this collaboration, “Press and Public Discourses of the ‘seen and unseen’ of sea level rise in Miami, Florida (USA)” at the Conference on Communication and Environment (COCE) in Leicester, U.K.

**Prado** co-authored with Juliet Pinto (FIU) and Alejandro Tirado-Alcaraz (RISD) *Environmental News in South America: Conflict, Crisis and Contestation*, a volume in the Studies in Media and Environmental Communication series published by Palgrave-MacMillan. This work, supported in part by the Foundation to Promote Scholarship and Teaching, is the culmination of seven years of scholarly analysis of news coverage of environmental risk associated with extractive projects in Brazil, Chile and Ecuador.

**Anne Proctor** presented “Vasari’s Revisions to the *Vita* of Botticelli: Rewriting History for the Medici Court.” Scholar’s Day for Exhibition “Botticelli and the Search for the Divine” at the Museum of Fine Arts, Boston in April 2017.

**Autumn Quezada de Tavarez** and **Kerri Warren** Co-author of Chapter: “Designing the Curriculum for Global Service Learning Abroad: Power and Health in El Salvador”— in *Passport to Change: Designing Academically Sound, Culturally Relevant Short Term Faculty-Led Study Abroad Programs*, Edited by **Susan Lee Pasquarelli, Robert A. Cole**, Michael J. Tyson (Stylus Publishing, 2017).

**Michael Rich** and **Denny Moers** participated in a group exhibition of artist's monoprints titled *Singular Repetitions* at UMass Dartmouth in New Bedford, MA, March 2017.

**Rich** was the featured artist at Imago Gallery, Warren, RI, April 2017.

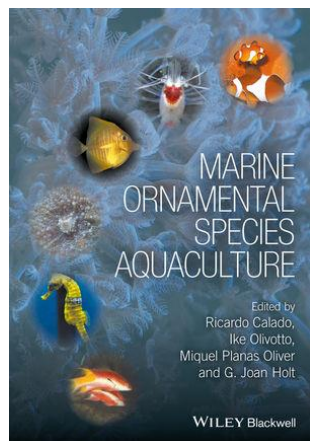
**Rich** had a solo exhibition of his painterly work in the print media of etching and woodcut titled "A Painter Makes Prints" at the Mary Castelnovo Gallery, Providence Art Club, June 2017.

**Rich** had an annual solo exhibition of new paintings, drawings and prints titled "A Life in Color" Old Spouter Gallery, Nantucket, MA, August 2017.

**Rich** exhibited with Providence Art Club members at the Spring Bull Gallery, Newport, RI, September 2017.

**Rich** exhibited at the Roger Free Library, Bristol, RI "Printmakers of the Providence Art Club, October 2017 through January 2017.

**Andy Rhyne** (four chapters) and **Joe Szczebak** (one chapter) are well represented as co-authors in recently published book entitled "Marine Ornamental Species Aquaculture".



**Joseph Roberts** received a National Endowment for the Humanities Fellowship to study "Islam in Asia: Traditions and Transformations" through the Asian Studies Development Program (ASDP) at the East-West Center and the University of Hawaii in Honolulu. The program brought scholars from around the region and the United States to explore Islam as an evolving system of thought and practice in South and Southeast Asia, including its impacts on social dynamics, the arts, and politics. The program stressed deep and context-rich engagement with key traditions, practices, and primary texts (in translation) throughout the four-week, multidisciplinary program. The participants developed and shared curricular materials applicable across a wide range of humanities disciplines, including religion, philosophy, history, art history, literature, and political science. Participants are working to organize a conference revisiting the themes from the Institute in Indonesia. book is in development. Professor Roberts and Stephanie Honchell (Fairleigh Dickinson University) are working on co-editing a book looking at networks of Islam in South Asia. The book will look at how cultural, social, and economic networks have transmitted Islam throughout the region and shapes the political and social landscape of the region today.



Professor Roberts at Shangri-La, Doris Duke's home (now a museum) in Honolulu.

**Roberts** presented a workshop "Games without Frontiers: Reacting to the Past in the Political Science Classroom" at American Political Science Association's

Teaching and Learning Conference (February) and the led a Teaching Café entitled “Reacting to the Past: Playing Games in a Student-Centered Classroom” and a participated in a roundtable entitled “Teaching Trump - Reflections from the Classroom “at the American Political Science Association Annual Meeting (September)

**Roberts** participated in the University of Massachusetts Law Review Immigration: Beyond the Wall Symposium presenting a panel session on “Refugees and Immigration: The Trump Administration’s Overreach,” in April 2017.

**Roberts** in June 2016 began editing the Political Science Instruction section of the *Journal of Political Science Education*, one of the four flagship journals of the American Political Science Association. The new editorial team has increased submissions in 2017 (through September) 46% over the previous year.



**Sharp, K.H.** Hosted 2<sup>nd</sup> Annual *Astrangia* Research Workshop, Aug 1-2, 2017. Hosted 25 researchers representing 18 institutions, including RWU, NSF, Woods Hole, Boston University, Penn State, and others.

**Sharp, K.H.** “Exploring New England's Reefs: using the coral *Astrangia poculata* to shed light on tropical coral microbiomes.” Southern Connecticut State University Department of Biology Weekly Seminar Series, invited talk. March 2, 2017.

**Sharp, K.H.** “Corals in New England? Gathering clues from the temperate coral

*Astrangia poculata* to help us understand the role of microbes in coral’s resilience and response to climate change.” UMass Dartmouth Department of Biology Weekly Seminar Series, invited talk. January 27, 2017.

**Sharp, K.H.** “Diving the Secret Coral Reefs of New England: using the temperate coral *Astrangia poculata* to understand tropical coral reefs.” University of Connecticut Department of Biology Weekly Seminar Series, invited talk. December 5, 2016.

**Sharp K.H.**, Pratte ZA, Kerwin AH, Rotjan RD, Stewart FJ. 2017. Season, but not symbiont state, drives microbiome structure in the temperate coral *Astrangia poculata*. Microbiome. In press.

K. Wommack, J. Gleghorn, G. Steward, J. Van Etten, **M. Marston, K. Sharp**. Received a \$3,000,000 NSF RII Track-2 FEC EPSCoR grant: Genomes to Phenomes. “G2P in VOM: An Experimental and Analytical Framework for Genome to Phenome Connections in Viruses of Microbes.”

Rotjan RD, Urban-Rich J, **Sharp K.H.**, and S. Grace received \$10,000 Boston University Urban Research Awards Program. “Hidden Problems in Secret Corals: Exploring Microplastic Abundance in Local, Temperate Corals along an Urban Gradient” 6/2017-6/2018.

**Jessica** Skolnikoff presented at the Northeastern Anthropology Association Meeting in Bridgewater, MA (April 2017). “Organized Recreation: The Evolution of Adult Pickup Basketball”, Co-authored with Jared Clough and **Robert Engvall**.

**Skolnikoff** organized a workshop titled “Using Anthropology after College.” with several panelists to discuss how anthropology can help students choose a career at the Northeastern Anthropology Association Meeting in Bridgewater, MA (April 2017).

**Skolnikoff** was a roundtable organizer on “Let’s Talk Sports, Recreation, and Culture”. At the American Anthropological Association. Minneapolis, MN (November 2016).

**Skolnikoff** participated in the North American Society for the Sociology of Sport Conference, Tampa, Florida (November 2016) “Old Timers Basketball, Noon Time Hoops.”

**June Speakman** Essay: Cities in Crisis: How States Can help Municipalities Facing Bankruptcy and Fiscal Distress. For the Rhode Island Research Collaboration, August 2017.

**James Tackach** wrote an article titled “Trump Should Follow GOP’s Green Presidents,” which appeared in The Providence Journal Commentary page on April 21, 2017, the day before Earth Day.

**Tackach** presented a paper titled “The Poet and the Park: William Cullen Bryant and the Creation of New York’s Central Park” at the 2017 American Literature Association Conference, held in Boston, May 25-28.

**Anne Tait** presented as Artist in Residence, Gettysburg National Park through the National Parks Foundation, at a conference her research titled “Making Sense of Memorials” at the Popular Culture Association/American Culture Association National Conference in San Diego, CA.



**Tait** also served as panel participant on “Legal Protections of Cemeteries: A National

Model” at the Association for Gravestone Studies Annual Conference in Tuscaloosa, Alabama in June 2017.

**Minoo Tehrani** and student, Michael Sennott, were two of the presenters at the 2<sup>nd</sup> ARTEM Organizational Innovatively and Sustainability International Conference, ICN Business School & University of Nancy Engineering School, September 14 – 16, 2017, Nancy, France. The presented research papers were entitled: Trade Pacts: Anything Green? (Minoo Tehrani) & Central America-Dominican Republic Free Trade Agreement (Minoo Tehrani, Michael Sennott).



**Peter Thompson** published his book (Diálogos Books): translation of L'Exil au féminin by Algerian writer Nabile Farès. English title – Exile: Women's Turn.

Borrelli, B., Gaynor, S., **Tooley, E.**, & Bartlett, K. (In Press). Identification of Three Different Types of Smokers Who Are Not Motivated to Quit: Results from a Latent Class Analysis. Manuscript. *Health Psychology*.

Busch, A. M., **Tooley, E. M.**, Dunsiger, S., Chattillion, E. A., Srouf, J. F., Pagoto, S. L., ... & Borrelli, B. (2017). Behavioral activation for smoking cessation and mood management following a cardiac event: results of a pilot randomized controlled trial. *BMC Public Health*, 17, 323.

**Tooley, E. M.**, & Borrelli, B. (2017). Characteristics of cigarette smoking in individuals in smoking concordant and smoking discordant couples. *Couple and Family Psychology: Research and Practice*, 6, 106-116.



**Tooley, E. M.**, Fava, J. L., & Borrelli, B. (2017, November). *The Relationship Antecedents of Smoking Scale*. Abstract accepted for presentation at the Association for Behavioral and Cognitive Therapies conference in San Diego, CA.

Ransford, B. & **Tooley, E. M.**, et al. (2017, May). *Generational and Gender Differences in Mindfulness, Resilience, and Spirituality*. Abstract presented at the Association for Psychological Science convention in Boston, MA.

Leguizamo, A., **Tooley, E. M.** (2017, May). *Predictive Ability of Attachment Style and Alcohol-Use Constructs on Young Adult Relationship Satisfaction*. Abstract presented at the Association for Psychological Science convention in Boston, MA.

**Tooley, E. M.**, Fava, J. L., Bartlett, Y. K., Wearden, A., Armitage, C. J., & Borrelli, B. (2017, May). *The Reasons for Not Quitting (RNQ) scale*. Abstract presented at the Association for Psychological Science convention in Boston, MA.

**Mel Topf** presented at a conference on *The Liberal Pursuit of Nature: Science, Humanities, and Liberal Education*, at Providence College in April. His paper, on "Hannah Arendt and the World Alienation of the Scientific Revolution," argued that the humanities as a group of academic disciplines arose in reaction to the growing prestige of science in American universities, and have failed to meet the challenges of science.

"GRB 110715A: the peculiar multi wave length evolution of the first afterglow detected by ALMA", R. Sanchez-Ramirez, **Adria Updike**, et. Al.; *Monthly Notices of the Royal Astronomical Society*, February, 2017.

**Randall Van Schepen** had his article, "Gerhard Richter's Critical Artistic Strategies: Politics, Terrorism and War,"

published in *Messages, Sages and Ages*, Vol 4, No 1, 2017. He served as an external reviewer for PhD applicants to the a.r.t.e.s. Eumanities program sponsored by the European Union and the University of Cologne in 2017.

**Yajni Warnapala** published "Numerical Solutions of the Radiosity's Equation for Low Reflectivity and Emissivity on planet Mars" International Journal of Mathematics Trends and Technology (IJMTT) V34. 13-18, 2016 (with student Quiyang Deng).

**Warnapala** published 'Numerical Solutions to the Radiosity Equation for the Spherical Quatrefoil on Mars' African Journal of Mathematics and Computer Science Research - accepted for publication (with student Hien Ngo)

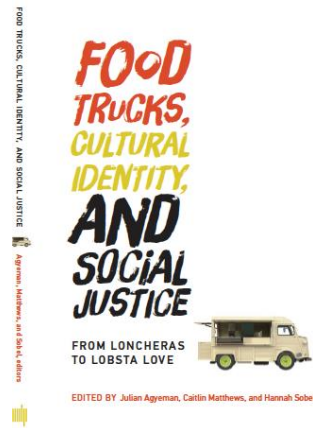
**Warnapala** received a grant from RI NASA -EPSCOR Grant -Project Title (\$9996): The Numerical Solutions of the Radiosity Equation for the Spherical Quatrefoil.

**Warnapala's** students presented posters at the JMM (Joint Mathematics Meeting -AMS and MAA) in Atlanta, GA: Quiyang Deng and Hien Ngo presented and participated in the MAA poster completion 'Numerical solutions of the Radioisty Model for the Super Ellipsoid and Spherical Quatrefoil by the Galerkin Method'

**Webb, P. & Wysor, B.** 2017. Designing the Curriculum for Field Study Abroad: Marine Biology in Panama and Belize. In: Pasquarelli, S. L., Cole, R. A. & Tyson, M. J. [Eds.] *Passport to Change: Designing Academically Sound, Culturally Relevant Short-Term Faculty-Led Study Abroad Programs*. Stylus Publishing, Sterling, pp. 208.

**Wessel, Ginette.** 2017. "Relaxing Regulatory Controls: Vending Advocacy and Rights in Mobile Food Vending." In *From Loncheras to Lobster Love: Food Trucks, Cultural Identity, and Social Justice*, edited

by Julian Agyeman, Caitlin Matthews, and Hannah Sobel. Cambridge: MIT Press.



Weblink: <https://mitpress.mit.edu/books/food-trucks-cultural-identity-and-social-justice>

Buffington-Adams, J., Cannon, M.A., Hernández-Saca, D.I., Vanderbilt, S., Vaughan, K., & **Winfield, A.G.** (Under review). Collective autoethnography and ableism. *Disability Studies Quarterly*.

**Winfield, A. G.** (forthcoming). Eugenic Ideology and the Institutionalization of the 'Technofix' on the Underclass. In **Canestrari, Alan S.** and Marlowe, Bruce A. (2018). *The Wiley International Handbook of Educational Foundations*. Boston: Wiley-Blackwell Publishers.

**Winfield, A. G.** (2017). Falling Down Memory Holes: Violence, Genocide and the Dismantling of Multicultural Liberal Democracy. Invited research overview to the Professors of Curriculum honorary society at the annual conference of the American Education Research Association. April, 2017, San Antonio, TX.

**Winfield, A. G.** (2016) Invited Role as Panel Discussant on Autoethnography and Ableism. Annual Conference of the Journal for Curriculum Theorizing. Dayton, Ohio, October, 2016.

Winfield, A. G. (2016) *In and around time and space: History as memory*. Invited

address to the Professors of Curriculum honorary society at the annual conference of the American Education Research Association. April, 2016 Washington, DC.

**Winfield, A. G.** (2016). Invited to participate on two panels addressing the dedicated 2016 Conference Theme *The Ethics of Historical Engagement* at the annual conference for the American Association for the Advancement of Curriculum Studies. April, 2017, Washington, D.C.

**Winfield, A. G.** (2017) Fathoming the Slave Trade: The Past is Present in Southern New England Identity. Presented at the Annual Conference of the American Educational Research Association. San Antonio, TX April 2017

**Winfield, A.** (2017) Imploding history: Reclaiming the vision of the blind eye. Presented at the annual conference of the American Association for the Advancement of Curriculum Studies, San Antonio, TX April 2017.

**Winfield, A. G.** and Hendry, P. M. (2016). De-territorializing the Field: Curriculum History as a Spatial Practice. Presented at the Annual Conference of the *Journal for Curriculum Theorizing*. Dayton, Ohio, October, 2016.

Buffington-Adams, J., Cannon, M.A., Hernández-Saca, D.I., Vanderbilt, S., & Vaughan, K. **Winfield, A. G.** (2016). *Collective autoethnography and ableism*. Paper presented at the 37<sup>th</sup> Annual Bergamo Conference on Curriculum and Classroom Practice, Bergamo Conference Center, Dayton, Ohio, October, 2016.

**Winfield** is working on a project that examines three historical trajectories that have heretofore been under acknowledged or suppressed within dominant historical renderings in North American history. Using a theoretical lens that seeks to elevate historical and collective memory as a way to analyze historical impact in the present, this

project focuses on 17<sup>th</sup> century Acadian Mi'kmaq relationships, the newly acknowledged Black Loyalist history in the Maritime Provinces, and the elevation of the history of the Acadian expulsion in 1755 in Louisiana and Nova Scotia. Each of these is relevant for their impact on present-day conceptions of self and other, policy practices, and legislative agendas.

Fernández-García, C., **Wysor, B.**, Riosmena-Rodríguez, R., Peña-Salamanca, E. & Verbruggen, H. 2016. DNA-assisted

identification of *Caulerpa* (Caulerpaceae, Chlorophyta) reduces species richness estimates for the Eastern Tropical Pacific. *Phytotaxa* 252:185-204.

**Leonard Yui** presented a paper "Language of Architectural Wood: Waste to Ecological Abundance" at the 2017 Architecture Research Centers Consortium (ARCC) Conference, Architectures of Complexity: Design, Systems, Society and Environment, Salt Lake City, which was also included in the conference proceedings.

## In the Campus Classroom/Community

**Susan Bosco's** Organizational Behavior classes worked with Coggeshall Farms Museum through the CPC in the Spring semester to accomplish the following: Revised orientation and training programs for employees and volunteers, improved communication systems for internal staff and the public, and updated employee and volunteer manuals. The students presented their recommendations to the Executive and Volunteer Directors at the end of the semester.

**Charlotte Carrington-Farmer 's** spring 2017 students in the Dimensions of History class worked with the Bristol Historical and Preservation Society on a CPC project on Civil War General Burnside. The project culminated in the students presenting their final findings to the local community at the Bristol State House on 10<sup>th</sup> May 2017. See [http://www.bhpsri.org/Past\\_Events.php](http://www.bhpsri.org/Past_Events.php)



**Avelina Espinosa** and Meagan Hackey winner of the American Society of Biochemistry & Molecular Biology (ASBMB) Travel Award January 2016 & 2017, presented a poster: Hackey M.\* & **Espinosa A.** 2017. Kinetic Analysis of the Inhibitory Effects of Substituted Pryazoline Derivatives and Natural Plant extracts on *Entamoeba histolytica* Alcohol and Aldehyde Dehydrogenase (EhADH2) Enzyme Activity. American Society for Biochemistry and Molecular Biology (ASBMB) Annual Meeting, Chicago, IL April 21-26.

Espinosa and Mathew Gabrielle, winner of the American Society of Biochemistry & Molecular Biology (ASBMB) Travel Award January 2017, presented a poster: Gabrielle M.\* & **Espinosa A.** 2017. Isolation and Characterization of Alcohol/Aldehyde Dehydrogenases (ADHE) in the *Entamoeba* Lineage. American Society for Biochemistry and Molecular Biology (ASBMB) Annual Meeting, Chicago, IL April 21-26.

**Espinosa A** and Lowerre, K, presented on Modelling EhADH2 Using Bioinformatics Tools. 2017. American Society for Biochemistry and Molecular Biology (ASBMB) Annual Meeting, Chicago, IL April 21-26.

**Alejandro Leguizamo** developed an iOS app that computes statistical effect sizes. The app, Effect Size Calculator, went live on Apple's App Store on 9/12/17.

**Clifford Murphy** served as faculty co-advisor to the Roger Williams University Student Affiliates of the American Chemical Society chapter; this includes helping organize the groups on campus and off campus outreach activities; helping to organize their trip to attend and present research at the American Chemical Society National Meeting held in San Francisco, CA in April 2017.

**Nancy Nester's** students in her Spring 2017 Writing for Social Change class, collaborated with the students in the Transition Academy @ RWU on several occasions, conducting interview and resume writing workshops and researching opportunities for employment and internships where young adults with varied learning styles could showcase their work ethic and skills. Students displayed their projects at the Spring 2017 Celebration of Writing.

**Paola Prado** led the Journalism Capstone students on an experiential education partnership with the Refugee Dream Center during the spring 2017. The resulting

[multimedia news reports](#) about the lives of refugees resettled in Rhode Island were showcased at the RWU Community Engagement Celebration in April and are published online. Pictured below, student video recording of Omar Bah, executive director of the Refugee Dream Center.



**Prado's** student journalists and aspiring documentary filmmakers reported on the Rhode Island boatbuilding history in an experiential education collaboration with the Herreshoff Marine Museum. Pictured here, journalism students Lexi Shy '17, Emily Kamens '18 and Eleni Kravoussianis '18 film vessels anchored in the harbor from on board the Bristol Marine motor launch.





**Prado** and Director of media and public relations Ed Fitzpatrick led a delegation of eight students at the New England Newspaper Convention in Boston in February, where the young reporters got to meet and interview the New England First Amendment Coalition awards honoree, *Washington Post* journalist Margaret Sullivan. Participants pictured in the photo below were journalism students Lexi Shy '17, Jamie Hipsman '18, Shelby Payanis '18, Harrison Connercy '17, and Lauren diCenso '18 meet media columnist Margaret Sullivan



"The Press and the President" panel, comprised of RWU graduate Omar Bah, executive director of the Refugee Dream Center; Journalism and Digital Media Prof. **Paola Prado**; Rhode Island Republican Party Chairman Brandon Bell; WPRI reporter Tim White and Law School Prof. David Logan, took questions from director of media and public relations Ed Fitzpatrick at the Providence campus on March 29<sup>th</sup>. Among the topics under discussion, the rise of Twitter as a presidential mouthpiece, "access journalism," authoritarianism and propaganda.

**Autumn Quezada-Grant** is co-leading with **Lee Jackson** the study abroad Winter Intersession course: Social Justice in Hispaniola. This is a high-impact practice based study abroad across the Dominican Republic. The course utilizes our local community ties to create an exciting program that looks at issues related to inequality, displacement, race and power across the island.

## In the Community

**Julie Coon** served as school safety expert reviewer for the FY 2017 Comprehensive School Safety Initiative: Developing Novel and Innovative School Safety Programs, Practices and Strategies. U.S. Department of Justice, Office of Justice Programs, National Institute of Justice in May 2017.

**Lindsey Gumb** is currently serving as an Open Educational Resource (OER) consultant to the University of Rhode Island, offering workshops for faculty members in all disciplines through their Office for the Advancement of Teaching and Learning.

**Geraldo Matos** is conducting an invited talk on October 13<sup>th</sup> regarding the findings of his research on What Makes (and Keeps)

Brands Cool to Digital Surgeons, a digitally-focused, marketing and design agency in New Haven, CT.

**Nicole Martino** has been named acting President Elect to the Rhode Island Section of the American Society of Civil Engineers for AY 17-18.

**Clifford Murphy** has been elected to Vice Chair of the Rhode Island Local Section of the American Chemical Society, a position he will hold from 2017-2019.

The Journalism program hosted Oxfam Regional Communications Manager and Editor Chris Hufstader in the Capstone course for a master class on how to report

on vulnerable populations. Pictured here, Cassandra Cote '17 records a video interview with Hufstader.



In April, Prof. Paola Prado led eight members of the Society of Professional Journalists student chapter travelled to New York City to attend the Region 1 Conference where they participated in workshops and received resume critiques from news industry professionals.



Pictured in NY (L to R) journalism students and SPJ members Carli Buono '17, Harrison Connery '17, Brett Johnson '19, Holly Huntoon '18, Rachel Bimonte '18, Giovanni Pinto '17, Sabrina Pollin '17 and Rachel Lombardi '17.

**Autumn Quezada-Grant** organized the Social Justice Month programing for October 2017. This is the sixth annual focus on Social Justice efforts on our campus.

**Robin Stone** directed his own adaptation of Euripides' *The Trojan Women* at the RWU Performing Arts Center last spring.



**Anne Tait** serves as Secretary and Chair of the Awards Committee on the Board of the Association for Gravestone Studies (2011-2017).

**Tait** also serves as Secretary on the Board of the Southside Cultural Center, Providence, RI (2016-present).

This fall, students enrolled in Introduction to Urban and Regional Planning (PLAN 301/501) taught by Dr. **Ginette Wessel** will have the opportunity to work with urban planners and officials in the cities of Pawtucket, Central Falls, and Cumberland on their Broad Street Regeneration Initiative. With support from the Community Partnerships Center on campus, students will investigate, reimagine, and provide recommendations to enhance their regeneration effort. Some issues the student will explore on Broad Street include land use, urban infill, equitable mobility, complete streets, arts and culture, and stakeholder mapping.

# Among Ourselves

**Jeremy Campbell** was elected in July to serve as President-Elect (2017-2020) of the Society for the Anthropology of Lowland South America (SALSA), an international scholarly organization of 500 students, faculty, and practitioners. SALSA is the premier organization dedicated to the study of cultures and peoples of the Amazon, Orinoco, and Chaco/Pampas areas of South America. Campbell will assume the presidency of SALSA in 2020, and hopes to host a biennial conference of the group in Rhode Island in 2022.



**Andrew Cohen** and his firm ACTWO Architects, Wayland MA, has received the 2017 CoreNet Global Annual Awards of Excellence Best New Workplace Small Renovations for Intarcia Therapeutics, Boston MA. The firm is also at work (with Julian Bonder) on the Clark University Colin-Flug Graduate Study Center, Worcester, MA, Ledgemont Technology Park in Lexington, MA, and Kensho Technologies Office, Cambridge, MA.

**Nathan Fash** became a principal in Supernormal LLC, an innovative design and research firm in Cambridge, MA.


**Lonnie Guralnick's** work at Rhodes University during his recent sabbatical has led to his writing a pilot proposal to bring students to South Africa to perform research. The work will include field work on restoration projects of *Portulacaria afra*. Other projects will include other studies of populations of *Portulacaria* including ecological and physiological studies building on the present work. Students would spend 3 weeks working and traveling around South Africa. Students will also visit Mountain Zebra and Addo Elephant national park to gain an understanding of the

biodiversity of the Eastern Cape of South Africa.

Royal Society of South Africa  
PUBLIC LECTURE



**Spekboom: A study of Photosynthetic Plasticity in a Changing Climate**



**Prof. Lonnie Guralnick**  
Roger Williams University  
Spekboom (*Portulacaria afra*) is an ecosystem engineer in the Albany Thicket. This species is adapted to regions with limited and sporadic rainfall — specifically via a fascinating photosynthetic pathway termed facultative CAM. Spekboom has outstanding growth rates given the arid environment in which it dominates. In this talk, Prof. Lonnie Guralnick shares his long-term ecophysiological research on spekboom, including a comparison of macroclimate and microclimate influences on the photosynthetic pathways utilized by this species, as well as unpacking the reasons for spekboom's ability to sequester carbon at far higher rates compared to species growing in wetter environments.

**DATE: Thursday 4 May, 13:00-14:00**  
**VENUE: Zoology Lecture Venue, Ground floor, Biological Science Building 12, South Campus**  
Please RSVP by Wednesday 2 May: Meredith.Fernandes@nmmu.ac.za

**Nancy Nester** attended the Paris Café Writing Workshop for one week this past summer which was conducted in Le Marais, Paris, where she honed skills that would facilitate her sabbatical research and writing.

**Roxanne O'Connell** was awarded the 2017 Neil Postman Mentor's Award at the New York State Communication Association's 75th Annual Conference in New York.

**Anthony Piermarini** and his firm Studio Luz Boston has won a 2017 Boston Society of Architects: Small Firms Small Project Award for Design Excellence for the Piedmont Park Square Residences, Boston. His work was also published in Wellesley Magazine in Spring 2017, "A Home at



Acorns", featuring Wellesley's Multicultural Center designed by Studio Luz.

In April, during Social Justice Week, **Autumn Quezada-Grant**, (History), **Laura Mattoon D'Amore** (American Studies), and **Paola Prado** (Journalism) hosted a special screening of "Check it!" followed by a master class with documentary filmmaker Dana Flor as part of the Rhode Island International Film Festival's annual Roving Eye Film Festival. The documentary, executive produced by Steve Buscemi and released by Louis C.K., follows the members of black LGBTQ gang as they confront harassment, poverty, and violence on the streets of Washington, D.C. This programming was co-sponsored by Film Studies and Gender and Sexuality Studies. Pictured here: Director Dana Flor speaks to students following the screening of "Check It!" in CAS 157.

**Andy Rhyne** is the 2017 MASNA Award Recipient. The Marine Aquarium Societies of North America (MASNA) Award recognizes those individuals who have who have contributed a lifetime of achievement to the marine aquarium industry.

**Rhyne** and his team grew a new school of lookdowns (*Selene vomer*) which are swimming in the Giant Ocean Tank at the New England. Follow the link for a short video of them in the tank.

<http://www.neaq.org/blog/lookdown-graduation-day/>

**Michael Rich** serves as Chair of the Board of the new, 501C3 non-profit, Arts in Common in Bristol, RI.

**Joseph Roberts** (Politics and International Relations) and **Sargon Donabed** (History and American Studies) worked on the Middle East-North Africa Studies Minor and Core Concentration proposal. Final edits are underway with additional faculty from across the university to move this interdisciplinary program to the curriculum committees.

**Minoo Tehrani** is organizing this conference with Dr. Nuno Guimarães da Costa from ICN-ARTEM Business School, Nancy, France. The title of the conference is The Global Interdisciplinary Conference: Green Cities. The conference will be held June 27 -30, 2018. web **AI Cutting** set up the website and can be found at [greencities.cuttingedgespace.com](http://greencities.cuttingedgespace.com).

The conference is a global interdisciplinary conference that deals with how through research and education along with business, engineering, design, technology, and other fields can enhance the well-being of the planet earth and its inhabitants.

Members of Program and Organizing Committees and the Track Chairs are representative of sixty-three universities from twelve countries in addition to representatives of organizations, such as Siemens Corporation and Avenir Swiss. **President Farish, Robert Cole**, and several of our faculty from GSB, Engineering, and Architecture Schools are featured on the website.



ICN-ARTEM Business School, Nancy, France

**Ginette Wessel** received an Academic Project Award from the Northern California American Planning Association (APA) Chapter for her East Santa Clara Street Community Assessment Report.