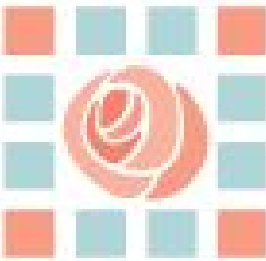


Saint Elizabeth Community
Where RI seniors come first™

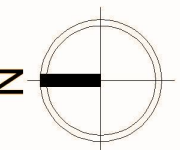
St. Elizabeth's Manor
Recreational Outdoor Spaces

CPDC



community
Partnership
Design center

Main space in question is behind the unit away from the parking area surrounded by building and trees.



The current conditions of the space are an outdoor space shared by both the children of the day care and the residents of the unit. Limiting the area is a path that curves around the outdoor space. Beyond the curve is a larger fenced in playground space.





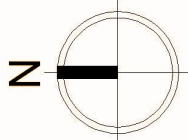
Solid wood fence facing East



Perforated fence facing South



New wooden awning over the patios
-Year round protection





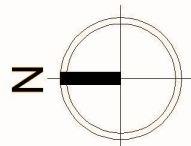
Solid wood fence facing East



Perforated fence facing South

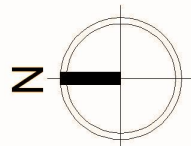


New wooden awning over the patios
-Year round protection



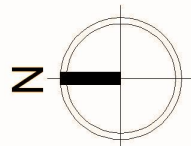


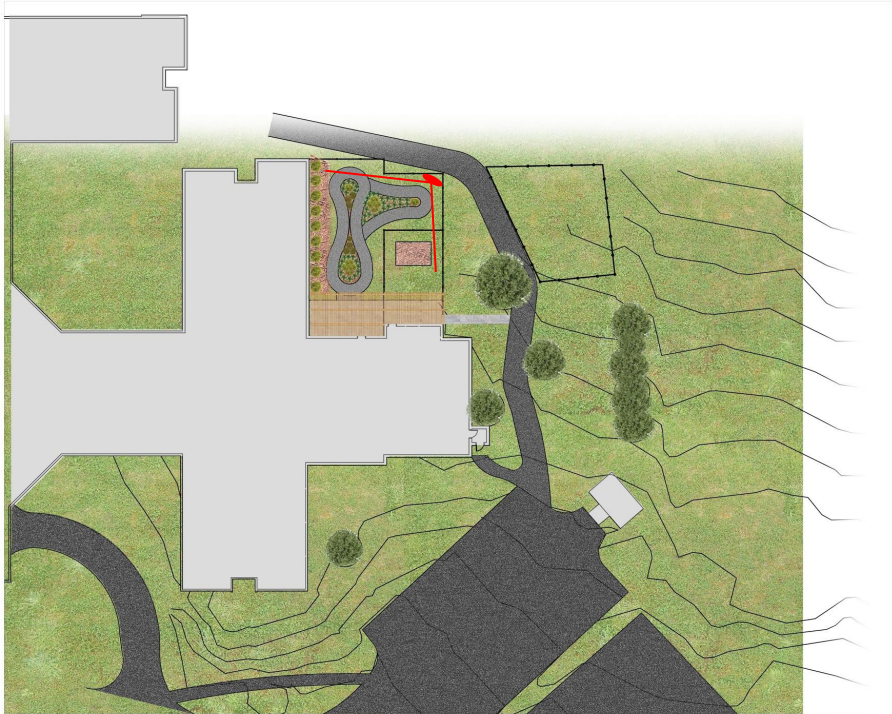
This view is an overview of the new designed space. After moving the path that surrounds the building, more area can be used for the recreational outdoor spaces. The area is divided into two main zones, one for the toddlers and the other for the residents to enjoy. The toddler zone is sized specifically for the requirements of square footage per child. In the adult zone, there is a wandering path that circles different kinds of plants to give variety on a residents journey around the area. Against the far end of the fence to the East are a series of wheelchair accessible planters. Against the wall and windows to the north are a series of plants that give privacy to the rooms that look out to the new space. Covering the patio space large enough to have gatherings is a new wooden canopy that allows for shade in the Summer months and some cover in the Winter months.





This view is from the patio space underneath the wooden canopy. With the woods backdrop, this space has a sense of nature. With large plants interrupting views within the space, the concept of wandering can really happen as people come upon different parts of the space. As heard in one of the meetings, the adults enjoy the company of the children. Therefore, the fence separating the adults from the children is perforated allowing views to and from the spaces. This allows for a physical separation but only a limited visual separation.





This view is from the far Southeast corner of the space. In this view, the handicap planters are just to the right along the fence and ahead is a section of the wandering path that splits off into the extra space. This view just highlights many previously stated ideas from giving privacy to the windows, to the new canopy over the patio space.

