

MASTER OF PUBLIC ADMINISTRATION



MASTER OF PUBLIC ADMINISTRATION

One of the most versatile degree programs available today, the Master of Public Administration (M.P.A.) prepares students interested in service-based careers in international government, non-profit organizations, and private industry. Students in the program explore the legal, political, regulatory, and social facets of government at the micro and macro level while applying what they learn to real-life scenarios, often in their current professional work.

Coursework focuses on management areas such as financial administration and organizational management as well as larger concepts like ethics and global awareness. Graduates go on to employment in a broad range of organizations from local municipalities and state agencies to working as government policy analysts, fundraisers, and educators.

The primary delivery model of the program is hybrid, offering students the opportunity to study on campus every other week while completing remaining coursework online. To customize your studies, you will select between one of two curricular tracks in health care administration or public management. Three optional graduate certificates in Health Care Administration, Leadership, and Public Management are also available.

The Master of Public Administration (M.P.A.) program:

- Is available full time or part time, hybrid or online
- Offers coursework during the evening to accommodate working professionals
- Provides two tracks: Health Care Administration and Public Management
- Delivers a curriculum based on the standards of the National Association of Schools of Public Affairs and Administration (NASPAA)

Credits 36

Time to Completion
Two-to-Three Years

CAMPUS LOCATION
Providence, RI or Online

Who It's For

Recent graduates and working professionals interested in working in government-oriented positions or exploring public policy and its intersections with other industries

Course Load

Full-time or Part-time

Key Features

Specialized tracks in health care administration and public management, options to pursue coursework in a hybrid or online format

Application Deadline

August 1 for Fall
December 15 for Spring
April 15 for Summer

**Roger Williams
University**
GRADUATE PROGRAMS

CURRICULUM

Required Courses: 18 credits

- PA 501 Foundations of Public Administration: Legal and Institutional
- PA 502 Organizational Dynamics
- PA 503 Data Management and Analysis
- PA 504 Public Policy and Program Evaluation
- PA 505 Public Budgeting & Finance
- PA 506 Public Personnel Management

Concentration Area: 12 credits

- Public Management Concentration Courses (*complete four (4) of the eight (8) courses*)
- PA 512 Intergovernmental Relations
- PA 513 Public Administration and Public Law
- PA 514 Urban Administration and Management
- PA 515 Ethics in Public Administration
- PA 516 Grant Writing and Management
- PA 517 Computer Applications for Public Managers

- PA 518 Program Evaluation
- PA 530 Special Topics in Public Administration or Health Care Administration Concentration Courses (*complete four (4) of the six (6) courses*)
- PA 530 Special Topics in Health Care Administration
- PA 550 Health Care Administration
- PA 551 Public Policy and Politics in Health Care Administration
- PA 552 Trends and Issues in Health Administration
- PA 553 Economics of Health and Medical Care
- PA 554 Health Informatics

Research and Directed Study Requirement: 6 Credits

- PA 590 Research in Public Administration
- PA 599 Directed Study in Public Information

ADMISSION REQUIREMENTS

Applications to the program are due by August 1 for fall admission, December 15 for spring admission, and April 15 for summer admission. To be considered for admission to the M.P.A. program, applicants must hold an earned bachelor's degree from a regionally-accredited college or university.

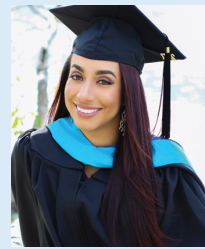
To apply, applicants must submit the following items to the Office of Graduate Admission:

1. Completed application form accompanied by a \$50 application fee
2. Official transcripts of all undergraduate and graduate coursework
3. Letter of Intent (two double-spaced pages maximum) describing your interest in Public Administration, relevant past experiences and career goals
4. Two (2) letters of recommendation attesting to your potential to succeed in graduate school
5. A current resume
6. If your first language is not English, an official report of TOEFL or IELTS results

Note: The GRE is not required for admission.

To read more about the application process and how to submit your materials, please visit grad.rwu.edu/apply.

STUDENT HIGHLIGHTS



Sasha Zapata, M.P.A. '17

Students like Sasha Zapata have found opportunities to deepen their experiences outside of U.S. borders during their studies. A Providence native, Sasha was selected to travel to Bogotá, Colombia, as one of nearly 400 graduate students from around the world competing in the 2017

NASPAA-Batten Student Simulation Competition on Food Security. Her team, based at Universidad de los Andes in Bogotá, took first place among more than 20 teams spread across four continents. Sasha now serves as project manager on the Transforming Clinical Practice Initiative at Rhode Island Quality Institute and was selected as a 2018 Founders' Fellow by the American Society for Public Administration (ASPA).



George Labonte, M.P.A. '17

Police officers often find a home in the M.P.A. program at RWU to better understand the administrative side of their work and develop skills for future leadership roles. For George Labonte, that interest created an opportunity to explore the intersections of policing and community relations, a springboard

for his capstone project, Community Policing Concepts and Evaluation. George has been able to put his work into practice as a lieutenant for the Wrentham Police Department in Massachusetts, where he has worked for more than 15 years. In 2015, George was the first RWU student selected to serve as an ASPA Founders' Fellow, and received the John W. Stout Outstanding MPA Student Award in 2017.